

Recombinant Human BACH2 protein, GST-tagged

Cat. No. BACH2-046H Lot. No. (See product label)

SPECIFICATION

Product Overview Human BACH2 full-length ORF (AAI66613.1, 1 a.a. - 841 a.a.) recombinant protein with GST tag at N-terminal.

Species Human

Source Wheat Germ

Form 50 mM Tris-HCl, 10 mM reduced Glutathione, pH=8.0 in the elution buffer.

Molecular Mass 119 kDa

AA Sequence

MSVDEKPDSPMYVYESTVHCTNILLGLNDQRKKDILCDVTLIVERKEFRAHRAVLAA
 CSEYFWQALVGQTKNDLVVSLPEEVTARGFGPLLQFAYTAKLLSRENIREVIRCAE
 FLRMHNLEDSCFSFLQTQLLNSEDGLFVCRKDAACQRPHEDCENSAGEEEDEEEET
 MDSETAKMACPRDQMLPEPISFEAAAIPVAEKEEALLPEPDVPTDTKESSEKDALTQ
 YPRYKKYQLACTKNVYNASSHSTSGFASTFREDNSSNSLKPGLARGQIKSEPPSEE
 NEEESITLCLSGDEPDADKDRAGDVEMDRKQSPAPTPTAPAGAACLERSRSVASPS
 CLRSLFSITKSVELSGLPSTSQQHFARSPACPFDKGITQGDLKTDYTPFTGNYGQPH
 VGQKEVSNFTMGSPLRGPGLEALCKQEGELDRRSVIFSSSACDQVSTSVHSYSGVS
 SLDKDLSEVPKGLWVGAGQSLPSSQAYSHGGLMADHLPGRMRPNTSCPVPIKVC
 PRSPPLETRTRTSSSCSSYSYAEDGSGGSPCSLPLCEFSSSPCSQGARFLATEHQE
 PGLMGDGMYNQVRPQIKCEQSYGTNSSDESFSFSEADSESCPVQDRGQEVKLPFP
 VDQITDLPRNDFQMMIKMHKLTSEQLEFIHDVRRRSKNRIAQAQRKRKRLDCIQNLE
 CEIRKLVCEKEKLLSERNQLKACMGELLDNFSCLSQEVCRDIQSPEQIQALHRYCPV

 Tel: 1-631-559-9269 1-516-512-3133

 Email: info@creative-biomart.com  Fax: 1-631-938-8127

 45-1 Ramsey Road, Shirley, NY 11967, USA

LRPMDLPTASSINPAPLGAEQNIASQCAVGENVPCCLEPGAAPPGPPWAPSNSTSE
NCTSGRRLEGTDPGTFSERGPPLPRSQTVTVDVFCQEMTDKCTTDEQPRKDYT

Notes	Best use within three months from the date of receipt of this protein.
Storage	Store at -80 centigrade. Aliquot to avoid repeated freezing and thawing.
Storage Buffer	50 mM Tris-HCl, 10 mM reduced Glutathione, pH=8.0 in the elution buffer.

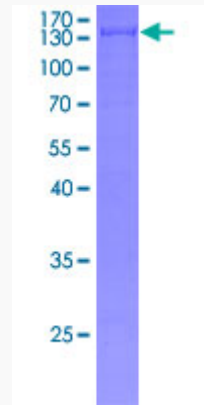
GENE INFORMATION

Gene Name	BACH2 BTB domain and CNC homolog 2 [Homo sapiens (human)]
Official Symbol	BACH2
Synonyms	BTBD25;BACH2
Gene ID	60468
mRNA Refseq	NM_021813
Protein Refseq	NP_068585
MIM	605394
UniProt ID	Q9BYV9.1

 Tel: 1-631-559-9269 1-516-512-3133

 Email: info@creative-biomart.com  Fax: 1-631-938-8127

 45-1 Ramsey Road, Shirley, NY 11967, USA



Tel: 1-631-559-9269 1-516-512-3133

Email: info@creative-biomart.com Fax: 1-631-938-8127

45-1 Ramsey Road, Shirley, NY 11967, USA