

# Recombinant Full Length Human BACH2 Protein, C-Flag-tagged

**Cat. No.** BACH2-990HFL    **Lot. No.** (See product label)

## SPECIFICATION

<b>Product Overview</b>	Recombinant Full Length Human BACH2 Protein, fused to Flag-tag at C-terminus, was expressed in Mammalian cells.
<b>Species</b>	Human
<b>Source</b>	Mammalian Cells
<b>Description</b>	Enables sequence-specific double-stranded DNA binding activity. Involved in primary adaptive immune response involving T cells and B cells. Located in cytosol and nucleoplasm. Implicated in immunodeficiency 60.
<b>Form</b>	25 mM Tris HCl, pH 7.3, 100 mM glycine, 10% glycerol.
<b>Molecular Mass</b>	92.4 kDa
<b>AA Sequence</b>	MSVDEKPDSPMYVYESTVHCTNILLGLNDQRKKDILCDVTLIVERKEFRAHRAVLAA CSEYFWQALVGQT KNDLVVSLPEEVTARGFGPLLQFAYTAKLLLSRENIREVIRCAE FLRMHNLEDSCFSFLQTQLLNSEDGL FVCRKDAACQRPHEDCENSAGEEEDEEEEE TMDSETAKMACPRDQMLPEPISFEAAAIPVAEKEEALLPEP DVPTDTKESSEKDALT QYPRYKKYQLACTKNVYNASSHSTSGFASTFREDNSSNSLKPGLARGQIKSEPP SE ENEEESITLCLSGDEPDAKDRAGDVEMDRKQPSPAPTPTAPAGAACLERSRSVASP SCLRSLFSITKS VELSLPSTSQQHFARSPACPFDKGITQGDLKTDYTPFTGNYGQP HVGQKEVSNFTMGSPLRGPGLEALC KQEGELDRRSVIFSSSACDQVSTSVHSYSG VSSLDKDLSEPVPKGLWVGAGQSLPSSQAYSHGGLMADHL PGRMRPNTSCPVPIK

 Tel: 1-631-559-9269    1-516-512-3133

 Email: [info@creative-biomart.com](mailto:info@creative-biomart.com)     Fax: 1-631-938-8127

 45-1 Ramsey Road, Shirley, NY 11967, USA

VCPRSPPLETRTRTSSSSCSSSYSYAEDGSGGSPCSLPLCEFSSSSPCSQGARFLATE H  
 QEPGLMGDGMYNQVRPQIKCEQSYGTNSSDESFSFSEADSESCPVQDRGQEVKL  
 PFPVDQITDLPRNDF QMMIKMHKLTSEQLEFIHDVRRRSKNRIAAQRCRKRKLDICIQ  
 NLECEIRKLVCEKEKLLSERNQLKACMG ELLDNFSCLSQEVCARDIQSPEQIQALHRY  
 CPVLRPMDLPTASSINPAPLGAEQNIAASQCAVGENVPCCL EPGAAPPGPPWAPSN  
 TSENCTSGRRLEGTDPGTFSERGPPLEPRSQTVTVDFCQEMTDKCTTDEQPRKDY  
 TSGPTRRRLEQKLISEEDLAANDILDYKDDDDKV

**Purity** > 80% as determined by SDS-PAGE and Coomassie blue staining.

**Stability** Stable for 12 months from the date of receipt of the product under proper storage and handling conditions. Avoid repeated freeze-thaw cycles.

**Storage** Store at -80 centigrade.

**Concentration** >50 ug/mL as determined by microplate BCA method.

**Preparation** Recombinant protein was captured through anti-DDK affinity column followed by conventional chromatography steps.

**Protein Families** Druggable Genome, Transcription Factors

**Full Length** Full L.

## GENE INFORMATION

**Gene Name** BACH2 BTB domain and CNC homolog 2 [ Homo sapiens (human) ]

**Official Symbol** BACH2

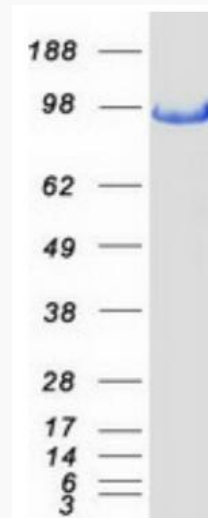
**Synonyms** IMD60; BTBD25

 Tel: 1-631-559-9269 1-516-512-3133

 Email: [info@creative-biomart.com](mailto:info@creative-biomart.com)  Fax: 1-631-938-8127

 45-1 Ramsey Road, Shirley, NY 11967, USA

Gene ID	60468
mRNA Refseq	NM_021813.4
Protein Refseq	NP_068585.1
MIM	605394
UniProt ID	Q9BYV9



Coomassie blue staining of purified BACH2 protein.

Tel: 1-631-559-9269 1-516-512-3133

Email: [info@creative-biomart.com](mailto:info@creative-biomart.com) Fax: 1-631-938-8127

45-1 Ramsey Road, Shirley, NY 11967, USA