

Recombinant Human BAG1 protein, GST-tagged

Cat. No. BAG1-050H **Lot. No.** (See product label)

SPECIFICATION

Product Overview	Human BAG1 full-length ORF (ENSP00000369026, 1 a.a. - 274 a.a.) recombinant protein with GST-tag at N-terminal.
Species	Human
Source	Wheat Germ
Description	The oncogene BCL2 is a membrane protein that blocks a step in a pathway leading to apoptosis or programmed cell death. The protein encoded by this gene binds to BCL2 and is referred to as BCL2-associated athanogene. It enhances the anti-apoptotic effects of BCL2 and represents a link between growth factor receptors and anti-apoptotic mechanisms. At least three protein isoforms are encoded by this mRNA through the use of a non-AUG (CUG) start site, and alternative, downstream, AUG translation initiation sites. [provided by RefSeq]
Form	50 mM Tris-HCl, 10 mM reduced Glutathione, pH=8.0 in the elution buffer.
Molecular Mass	57.5 kDa
AA Sequence	MKKKTRRRSTRSEELTRSEELTLSEEATWSEEATQSEEATQGEEMNRSQEVTRDE ESTRSEEV TREEMAAAGLTVTVTHSNEKHDLHVTSQQGSSEPVVQDLAQVVEEVIG VPQSFQKLIFKKGKSLKEMETPLSALGIQDGCVRMLIGKKNSPQEEVELKCLKHLEKSV EKIADQLEELNKELTGIQQGFLPKDLQAEALCKLDRRVKATIEQFMKILEEIDTLILPEN FKDSRLKRKGLVKKVQAFLAECTVEQNICQETERLQSTNFALAE

 Tel: 1-631-559-9269 1-516-512-3133

 Email: info@creative-biomart.com  Fax: 1-631-938-8127

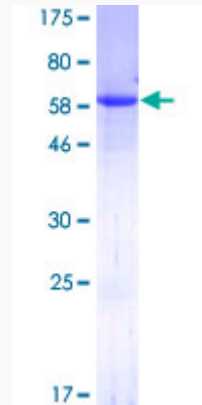
 45-1 Ramsey Road, Shirley, NY 11967, USA

Notes	Best use within three months from the date of receipt of this protein.
Storage	Store at -80 centigrade. Aliquot to avoid repeated freezing and thawing.
Storage Buffer	50 mM Tris-HCl, 10 mM reduced Glutathione, pH=8.0 in the elution buffer.
GENE INFORMATION	
Gene Name	BAG1 BCL2-associated athanogene [Homo sapiens]
Official Symbol	BAG1
Synonyms	BAG1; BCL2-associated athanogene; BAG family molecular chaperone regulator 1; BAG-1; Bcl-2-binding protein; receptor-associated protein, 46-KD; Bcl-2 associating athanogene-1 protein; glucocortoid receptor-associated protein RAP46; HAP; RAP46;
Gene ID	573
mRNA Refseq	NM_001172415
Protein Refseq	NP_001165886
MIM	601497
UniProt ID	Q99933

 Tel: 1-631-559-9269 1-516-512-3133

 Email: info@creative-biomart.com  Fax: 1-631-938-8127

 45-1 Ramsey Road, Shirley, NY 11967, USA



 Tel: 1-631-559-9269 1-516-512-3133

 Email: info@creative-biomart.com  Fax: 1-631-938-8127

 45-1 Ramsey Road, Shirley, NY 11967, USA