

Recombinant Human BCL2-Associated Athanogene, GST-tagged

Cat. No. BAG1-1434H **Lot. No.** (See product label)

SPECIFICATION

Product Overview	Recombinant human BAG1 (72-end) was expressed in <i>E. coli</i> cells using an N-terminal GST tag. MW = 66kDa.
Species	Human
Source	<i>E. coli</i>
ProteinLength	72-end a.a.
Description	BAG1 (also known as BCL2-associated athanogene) is a membrane protein rich in glutamic acid residues that binds to BCL2 and blocks apoptosis or programmed cell death. The BAG1-BCL2 complex enhances the anti-apoptotic effects of BCL2 and represents a link between growth factor receptors and anti-apoptotic mechanisms. Overexpression of BAG1 in 3T3 fibroblasts prevents apoptosis in the presence of low serum. BAG1 has also been shown to interact with activated glucocorticoid, androgen, estrogen and progesterone receptors. Binding to these receptors by BAG1 is dependent on receptor activation.
Sequence	72-end.
Applications	Western Blot.
Storage And Stability	Store product at -70°C. For optimal storage, aliquot target into smaller quantities after centrifugation and store at recommended temperature. For most favorable

 Tel: 1-631-559-9269 1-516-512-3133

 Email: info@creative-biomart.com  Fax: 1-631-938-8127

 45-1 Ramsey Road, Shirley, NY 11967, USA

performance, avoid repeated handling and multiple freeze/thaw cycles.

GENE INFORMATION

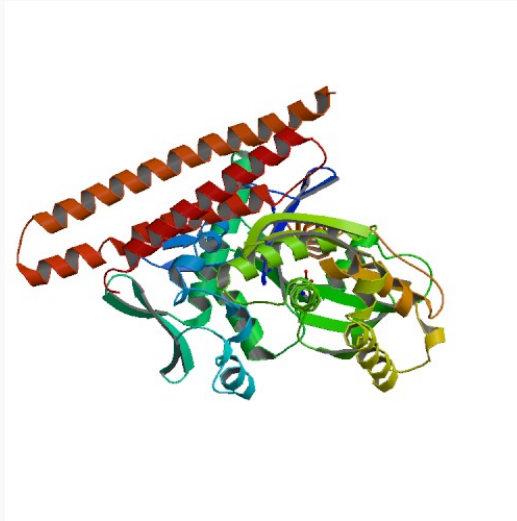
Gene Name	BAG1 BCL2-associated athanogene [Homo sapiens]
Synonyms	BAG1; BCL2-associated athanogene; RAP46; BAG-1; HAP; BCL2-associated athanogene 1; Bcl-2-associated athanogene 1; Glucocorticoid receptor-associated protein RAP46
Gene ID	573
mRNA Refseq	NM_004323
Protein Refseq	NP_004314
MIM	601497
UniProt ID	Q99933
Chromosome Location	9p12
Function	protein binding; receptor signaling protein activity

 Tel: 1-631-559-9269 1-516-512-3133

 Email: info@creative-biomart.com  Fax: 1-631-938-8127

 45-1 Ramsey Road, Shirley, NY 11967, USA

PDB rendering based
on 1hx1.



 Tel: 1-631-559-9269 1-516-512-3133

 Email: info@creative-biomart.com  Fax: 1-631-938-8127

 45-1 Ramsey Road, Shirley, NY 11967, USA