

Recombinant Human BCL2-Associated Athanogene

Cat. No. BAG1-2057H **Lot. No.** (See product label)

SPECIFICATION

Product Overview	Recombinant human BAG1 was expressed in <i>E.coli</i> and purified by using conventional chromatography techniques. 25.9 kDa (230aa).
Species	Human
Source	E.coli
Description	BCL2-associated athanogene, also known as BAG1, is a member of the Bcl-2 family of proteins that play varied stimulatory or inhibitory roles in the regulation of programmed cell death. This functions in conjunction with Bcl-2 to inhibit apoptosis. Also, BAG1 has been implicated in age related neurodegenerative diseases as Alzheimer"s. It is localized to the cytosol, nucleus or both.
Form	Liquid. In 20mM Tris-HCl buffer (pH7.5) containing 100mM NaCl, 10% glycerol.
Purity	> 90% by SDS - PAGE.
Concentration	1 mg/ml (determined by Bradford assay).
Sequences Of Amino Acids	MNRSQEVTRD EESTRSEEVT REEMAAAGLT VTVTHSNEKH DLHVTSQQGS SEPVVQDLAQ VVEEVIGVPQ SFQKLIFKGK SLKEMETPLSALGIQDGCRCV MLIGKKNSPQ EEVELKCLKH LEKSVEKIAD QLEELNKELT GIQQGFLPKD LQAEALCKLD RRVKATIEQF MKILEEIDTLILPENFKDSR LKRKGLVKKV QAFLAECDTV EQNICQETER LQSTNFALAE.

 Tel: 1-631-559-9269 1-516-512-3133

 Email: info@creative-biomart.com  Fax: 1-631-938-8127

 45-1 Ramsey Road, Shirley, NY 11967, USA

Storage Can be stored at +4°C short term (1-2 weeks). For long term storage, aliquot and store at -20°C or -70°C. Avoid repeated freezing and thawing cycles.

GENE INFORMATION

Gene Name BAG1 BCL2-associated athanogene [Homo sapiens]

Synonyms BAG1; BCL2-associated athanogene; RAP46; BAG-1; HAP; BCL2-associated athanogene 1; Bcl-2-associated athanogene 1; Glucocorticoid receptor-associated protein RAP46

Gene ID 573

mRNA Refseq NM_004323

Protein Refseq NP_004314

MIM 601497

UniProt ID Q99933

Chromosome Location 9p12

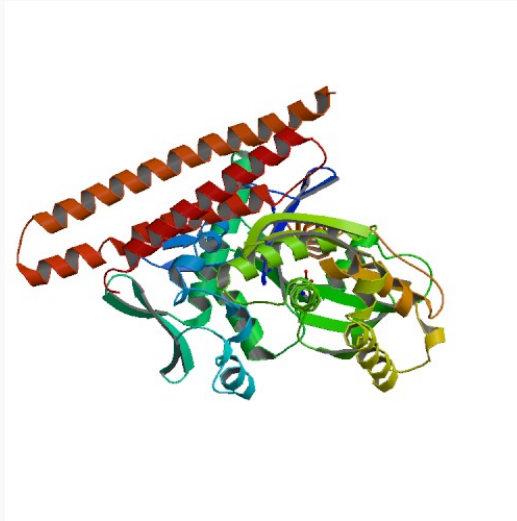
Function protein binding; receptor signaling protein activity

 Tel: 1-631-559-9269 1-516-512-3133

 Email: info@creative-biomart.com  Fax: 1-631-938-8127

 45-1 Ramsey Road, Shirley, NY 11967, USA

PDB rendering based
on 1hx1.



 Tel: 1-631-559-9269 1-516-512-3133

 Email: info@creative-biomart.com  Fax: 1-631-938-8127

 45-1 Ramsey Road, Shirley, NY 11967, USA