

Recombinant Human BAG2 protein, GST-tagged

Cat. No. BAG2-052H **Lot. No.** (See product label)

SPECIFICATION

Product Overview	Human BAG2 full-length ORF (NP_004273.1, 1 a.a. - 211 a.a.) recombinant protein with GST-tag at N-terminal.
Species	Human
Source	Wheat Germ
Description	<p>BAG proteins compete with Hip for binding to the Hsc70/Hsp70 ATPase domain and promote substrate release. All the BAG proteins have an approximately 45-amino acid BAG domain near the C terminus but differ markedly in their N-terminal regions. The predicted BAG2 protein contains 211 amino acids. The BAG domains of BAG1, BAG2, and BAG3 interact specifically with the Hsc70 ATPase domain in vitro and in mammalian cells. All 3 proteins bind with high affinity to the ATPase domain of Hsc70 and inhibit its chaperone activity in a Hip-repressible manner. [provided by RefSeq</p>
Form	50 mM Tris-HCl, 10 mM reduced Glutathione, pH=8.0 in the elution buffer.
Molecular Mass	50.2 kDa
AA Sequence	<p>MAQAKINAKANEGRFCRSSSMADRSSRLLESLDQLELRVEALREAATAVEQEKEILL EMIHSIQNSQDMRQISDGEREELNLTANRLMGRTLTVEVSVETIRNPQQQESLKHAT RIIDEVVNKFLDDLGNKSHLMSLYSACSSEVPHGVPDQKFQSVIGCALEDQKKIKR RLETLRNIEUSDKAIKLEHSGAGSKTLQQNAESRFN</p>
Notes	Best use within three months from the date of receipt of this protein.

 Tel: 1-631-559-9269 1-516-512-3133

 Email: info@creative-biomart.com  Fax: 1-631-938-8127

 45-1 Ramsey Road, Shirley, NY 11967, USA

Storage Store at -80 centigrade. Aliquot to avoid repeated freezing and thawing.

Storage Buffer 50 mM Tris-HCl, 10 mM reduced Glutathione, pH=8.0 in the elution buffer.

GENE INFORMATION

Gene Name BAG2 BCL2-associated athanogene 2 [Homo sapiens]

Official Symbol BAG2

Synonyms BAG2; BCL2-associated athanogene 2; BAG family molecular chaperone regulator 2; bcl-2-associated athanogene 2; BAG-family molecular chaperone regulator-2; dJ41711.2 (BAG-family molecular chaperone regulator 2); BAG-2; dJ41711.2; KIAA0576; MGC149462;

Gene ID 9532

mRNA Refseq NM_004282

Protein Refseq NP_004273

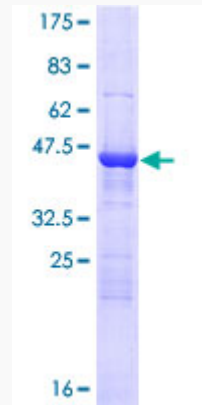
MIM 603882

UniProt ID O95816

 Tel: 1-631-559-9269 1-516-512-3133

 Email: info@creative-biomart.com  Fax: 1-631-938-8127

 45-1 Ramsey Road, Shirley, NY 11967, USA



 Tel: 1-631-559-9269 1-516-512-3133

 Email: info@creative-biomart.com  Fax: 1-631-938-8127

 45-1 Ramsey Road, Shirley, NY 11967, USA