

Recombinant Human BAG6 Protein (1-321 aa), His-Myc-tagged

Cat. No. BAG6-2770H Lot. No. (See product label)

SPECIFICATION

Product Overview Recombinant Human BAG6 Protein (1-321 aa) is produced by Baculovirus expression system. This protein is fused with a 10xHis tag at the N-terminal and a Myc tag at the C-terminal. Research Area: Cancer. Protein Description: Partial.

Species Human

Source Insect Cells

ProteinLength 1-321 aa

Form Tris-based buffer,50% glycerol

Molecular Mass 38.7 kDa

AA Sequence MEPNDSTSTAVEEPDSLEVLVKTLDSTRTFIVGAQMNVKEFKEHIAASVSIPSEKQR
LIYQGRVLQDDKKLQEYNVGGKVIHLVERAPPQTHLPSGASSGTGSASATHGGGSP
PGTRGPGASVHDRNANSYVMVGTFNLPDGSASVDVHINMEQAPIQSEPRVRLVMA
QHMIRDIQTLLSRMECRGGPQPQHSQPPPQPPAVTPEPVALSSQTSEPVESEAPPR
EPMEAEVEERAPAQNPELTPGPAPAGPTPAPETNAPNHPSPA EYVEVLQELQRL
SRLQPFLQRYEVLGAAATTDYNNNHEGREEDQRLINLVG

Purity > 85% as determined by SDS-PAGE.

Notes Repeated freezing and thawing is not recommended. Store working aliquots at 4 centigrade for up to one week.

 Tel: 1-631-559-9269 1-516-512-3133

 Email: info@creative-biomart.com  Fax: 1-631-938-8127

 45-1 Ramsey Road, Shirley, NY 11967, USA

Storage The shelf life is related to many factors, storage state, buffer ingredients, storage temperature and the stability of the protein itself. Generally, the shelf life of liquid form is 6 months at -20 centigrade/-80 centigrade. The shelf life of lyophilized form is 12 months at -20 centigrade/-80 centigrade.

Concentration A hardcopy of COA will be sent along with the products. Please refer to it for detailed information.

GENE INFORMATION

Gene Name [BAG6 BCL2-associated athanogene 6 \[Homo sapiens \]](#)

Official Symbol [BAG6](#)

Synonyms BAG6; BCL2-associated athanogene 6; D6S52E; G3; scythe; protein G3; protein Scythe; BAT3; BAG-6;

Gene ID [7917](#)

mRNA Refseq [NM_001098534](#)

Protein Refseq [NP_001092004](#)

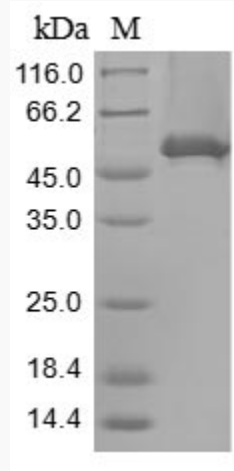
MIM [142590](#)

UniProt ID [P46379](#)

 Tel: 1-631-559-9269 1-516-512-3133

 Email: info@creative-biomart.com  Fax: 1-631-938-8127

 45-1 Ramsey Road, Shirley, NY 11967, USA



(Tris-Glycine gel) Discontinuous SDS-PAGE (reduced) with 5% enrichment gel and 15% separation gel.

 Tel: 1-631-559-9269 1-516-512-3133

 Email: info@creative-biomart.com  Fax: 1-631-938-8127

 45-1 Ramsey Road, Shirley, NY 11967, USA