

Recombinant Human BAGE2 Protein, Myc/DDK-tagged, C13 and N15-labeled

Cat. No. BAGE2-4088H Lot. No. (See product label)

SPECIFICATION

Product Overview	BAGE2 MS Standard C13 and N15-labeled recombinant protein (NP_872288) with a C-terminal MYC/DDK tag, was expressed in HEK293 cells.
Species	Human
Source	HEK293
Description	BAGE2 (BAGE Family Member 2) is an RNA Gene, and is affiliated with the ncRNA class. Diseases associated with BAGE2 include Melanoma.
Molecular Mass	12 kDa
AA Sequence	MAAGVVFLALSAQLLQARLMKEESPVVSWRLEPEDGTALDVHVFVSTLEPLSNAVKR NVPRCIIILVLQEPTPFRISVTSSCFVQNTLTLLKDRRKMQTVQCATARETSTRTRPL EQKLISEEDLAANDILDYKDDDDKV
Purity	> 80% as determined by SDS-PAGE and Coomassie blue staining
Stability	Stable for 3 months from receipt of products under proper storage and handling conditions.
Storage	Store at -80 centigrade. Avoid repeated freeze-thaw cycles.
Concentration	50 µg/mL as determined by BCA

 Tel: 1-631-559-9269 1-516-512-3133

 Email: info@creative-biomart.com  Fax: 1-631-938-8127

 45-1 Ramsey Road, Shirley, NY 11967, USA

Storage Buffer 100 mM glycine, 25 mM Tris-HCl, pH 7.3.

GENE INFORMATION

Gene Name BAGE2 BAGE family member 2 [Homo sapiens (human)]

Official Symbol BAGE2

Synonyms BAGE2; B melanoma antigen family, member 2; B melanoma antigen 2; cancer/testis antigen family 2; member 2; CT2.2; cancer/testis antigen 2.2; cancer/testis antigen family 2, member 2;

Gene ID 85319

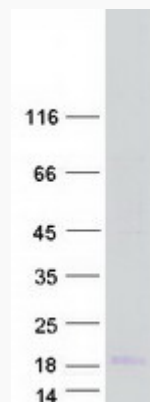
mRNA Refseq NM_182482

Protein Refseq NP_872288

MIM 617776

UniProt ID Q86Y30

SDS-PAGE



 Tel: 1-631-559-9269 1-516-512-3133

 Email: info@creative-biomart.com  Fax: 1-631-938-8127

 45-1 Ramsey Road, Shirley, NY 11967, USA