

## Recombinant Human BAHD1 protein, GST-tagged

Cat. No. BAHD1-059H Lot. No. (See product label)

### SPECIFICATION

<b>Product Overview</b>	Human BAHD1 full-length ORF ( NP_055767.2, 1 a.a. - 780 a.a.) recombinant protein with GST-tag at N-terminal.
<b>Species</b>	Human
<b>Source</b>	Wheat Germ
<b>Form</b>	50 mM Tris-HCl, 10 mM reduced Glutathione, pH=8.0 in the elution buffer.
<b>Molecular Mass</b>	111.1 kDa
<b>AA Sequence</b>	<p>           MTHTRRKS L PMLSSGLTGRREPLQMEDSNMEQGV EGV EPGMPE SPGHLTGRRK N            YPLRKRPLVPEKPKACKVLLTRLE NVAGPRSADEADELPPDLPKPPSPAPSS EDPGL            AQPRKRRLASLNAEALNNLLEREDTSSLAGTRRSRAGDPHRSRDRDRATGGWSS            SKKRPR LGDLGGSRHLSPEPAPDEGPRRDGDPAPKRLASLNAA AFLKLSQERELP            LRLPRAHAEVDGRSTEPPAPKAPRPKWPKVNGKNYPKAWQGASSGEAAGPPGWQ            GCPDEPWPSATPCGSPVQPSHKPLSKALESPLGLRPHLPLLMGGQAALKPEPGRP            GEESPAPKQELHQPSFPTPQLSPLMPGNP ADYNGLCVGP ELTALGSFYLYCGQE            GLQCGGYSPCPMLPEGKLS PVAAPHEEGLLLAPSSVPSGTFQHPWPWGSSRYCSS            EDTGVNGYSICGVLPLSVTHAGTTCGGCPYKMPFAAEGCRSLGQLEFPLPEAGHPA            SPAHPLLGCVPVSPVPPAAEPVPHLQTPTSEPQTVARACPQSAKPPSGSKSGLRTGS            SCRHTARSKAARRPSHPKQPRVQRPRRRRRRRRTNGWVPVGAACEKAVYVLDE            PEPAIRKSYQAV ERHGETIRVRD TVLLKSGPRKTSTPYVAKISALWENPESGELMMS            LLWYYRPEHLQGGRRSPSMHEPLQNEVFASRHQDQNSVACIEEKCYVLTFAEYCRF         </p>

 Tel: 1-631-559-9269 1-516-512-3133

 Email: [info@creative-biomart.com](mailto:info@creative-biomart.com)  Fax: 1-631-938-8127

 45-1 Ramsey Road, Shirley, NY 11967, USA

CAMAKRRGEGLP SRKTALVPPSADYSTPPHRTVPEDTDPELVFLCRHVYDFRHGRI  
LKNPQ

**Notes** Best use within three months from the date of receipt of this protein.

**Storage** Store at -80 centigrade. Aliquot to avoid repeated freezing and thawing.

**Storage Buffer** 50 mM Tris-HCl, 10 mM reduced Glutathione, pH=8.0 in the elution buffer.

## GENE INFORMATION

**Gene Name** [BAHD1 bromo adjacent homology domain containing 1 \[ Homo sapiens \]](#)

**Official Symbol** [BAHD1](#)

**Synonyms** BAHD1; bromo adjacent homology domain containing 1; bromo adjacent homology domain-containing 1 protein; KIAA0945; BAH domain-containing protein 1;

**Gene ID** [22893](#)

**mRNA Refseq** [NM\\_014952](#)

**Protein Refseq** [NP\\_055767](#)

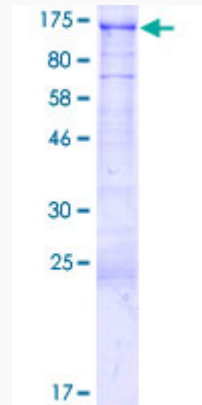
**MIM** [613880](#)

**UniProt ID** [Q8TBE0](#)

 Tel: 1-631-559-9269 1-516-512-3133

 Email: [info@creative-biomart.com](mailto:info@creative-biomart.com)  Fax: 1-631-938-8127

 45-1 Ramsey Road, Shirley, NY 11967, USA



Tel: 1-631-559-9269 1-516-512-3133

Email: [info@creative-biomart.com](mailto:info@creative-biomart.com) Fax: 1-631-938-8127

45-1 Ramsey Road, Shirley, NY 11967, USA