

## Recombinant Human BAIAP2L2 protein, GST-tagged

Cat. No. BAIAP2L2-065H Lot. No. (See product label)

### SPECIFICATION

<b>Product Overview</b>	Human BAIAP2L2 full-length ORF ( AAH15619.1, 1 a.a. - 518 a.a.) recombinant protein with GST-tag at N-terminal.
<b>Species</b>	Human
<b>Source</b>	Wheat Germ
<b>Form</b>	50 mM Tris-HCl, 10 mM reduced Glutathione, pH=8.0 in the elution buffer.
<b>Molecular Mass</b>	84.1 kDa
<b>AA Sequence</b>	<p>           MAPEMDQFYRSTMAIYKSIMEQFNPALENLVYLGNNYLRAFHALSEAAEVYFSAIQKI            GERALQSPTSQILGEILVQMSDTQRHLNSDLEVVVQTFHGGLLQHMEKNTKLDMQFI            KDSRQHYELEYRHRAANLEKCMSELWRMERKRDKNVREMKESVNRLHAQMQUAFV            SESQRAAELEEKRRYRFLAEKHLNLSNTFLQFFGRARGMLQNRVLLWKEQSEASRS            PSRAHSPGLLGPALGPPYPSGRLTPTRLDMPPRPLGEFSSPRSRHGSGSYGTEPD            ARPASQLEPDRRSLPRTPSASSLYSGSAQSSRSNSFGERPGGGGGARRVRALVSH            SEGANHTLLRFSAGDVVEVLVPEAQNGWLYGKLEGSSASGWFPAYVKALEEGPV            NPMTPTPMTSMTSMPMTPTMNPNGNELPSRSYPLRGSHSLDDLLDRPGNSTP            SRVPSRAPSPAPPPLPSSRRSSMGSTAVATDVKKLMSSEQYPPQELFPRGTNPFAT            VKLRPTITNDRSAPLIR         </p>
<b>Notes</b>	Best use within three months from the date of receipt of this protein.
<b>Storage</b>	Store at -80 centigrade. Aliquot to avoid repeated freezing and thawing.

 Tel: 1-631-559-9269 1-516-512-3133

 Email: [info@creative-biomart.com](mailto:info@creative-biomart.com)  Fax: 1-631-938-8127

 45-1 Ramsey Road, Shirley, NY 11967, USA

**Storage Buffer** 50 mM Tris-HCl, 10 mM reduced Glutathione, pH=8.0 in the elution buffer.

## GENE INFORMATION

**Gene Name** BAIAP2L2 BAI1-associated protein 2-like 2 [ Homo sapiens ]

**Official Symbol** BAIAP2L2

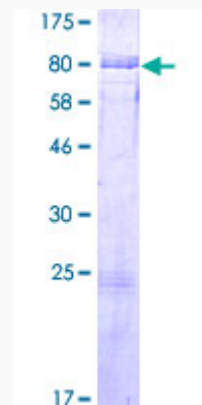
**Synonyms** BAIAP2L2; BAI1-associated protein 2-like 2; brain-specific angiogenesis inhibitor 1-associated protein 2-like protein 2; FLJ22582; pinkbar; BAI1-associated protein 2-like protein 2; planar intestinal- and kidney-specific BAR domain protein;

**Gene ID** 80115

**mRNA Refseq** NM\_025045

**Protein Refseq** NP\_079321

**UniProt ID** Q6UXY1



 Tel: 1-631-559-9269 1-516-512-3133

 Email: [info@creative-biomart.com](mailto:info@creative-biomart.com)  Fax: 1-631-938-8127

 45-1 Ramsey Road, Shirley, NY 11967, USA