

Recombinant Human BAMBI protein, hFc-tagged

Cat. No. BAMBI-6754H Lot. No. (See product label)

SPECIFICATION

Product Overview	Recombinant Human BAMBI protein(Q13145)(Glu27-Ala152), fused with C-terminal hFc tag, was expressed in HEK293.
Species	Human
Source	HEK293
ProteinLength	Glu27-Ala152
Tag	C-hFc
Form	Supplied as 0.22µm filtered solution in PBS (pH 7.4).
Molecular Mass	The protein has a predicted MW of 40.7 kDa. Due to glycosylation, the protein migrates to 49-55 kDa based on Tris-Bis PAGE result.
Endotoxin	Less than 1EU per µg by the LAL method.
Purity	> 95% as determined by Tris-Bis PAGE;> 95% as determined by HPLC
Storage	Valid for 12 months from date of receipt when stored at -80°C. Recommend to aliquot the protein into smaller quantities for optimal storage. Please do not repeated freeze-thaw cycles.
Reconstitution	It is recommended that sterile water be added to the vial to prepare a stock solution of

 Tel: 1-631-559-9269 1-516-512-3133

 Email: info@creative-biomart.com  Fax: 1-631-938-8127

 45-1 Ramsey Road, Shirley, NY 11967, USA

0.2 ug/ul. Centrifuge the vial at 4°C before opening to recover the entire contents.

GENE INFORMATION

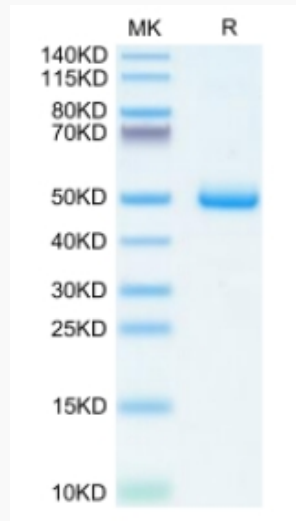
Gene Name	BAMBI BMP and activin membrane-bound inhibitor homolog (Xenopus laevis) [Homo sapiens]
Official Symbol	BAMBI
Synonyms	BAMBI; BMP and activin membrane-bound inhibitor homolog (Xenopus laevis); BMP and activin membrane-bound inhibitor homolog; NMA; non-metastatic gene A protein; putative transmembrane protein NMA;
Gene ID	25805
mRNA Refseq	NM_012342
Protein Refseq	NP_036474
MIM	604444
UniProt ID	Q13145

 Tel: 1-631-559-9269 1-516-512-3133

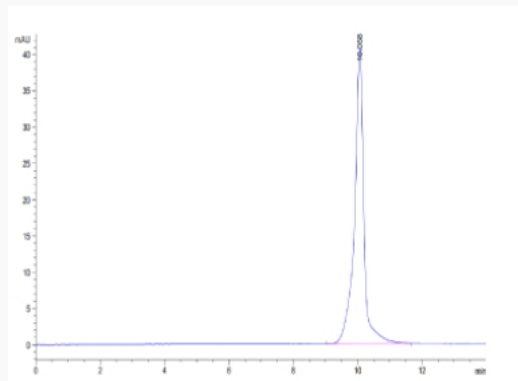
 Email: info@creative-biomart.com  Fax: 1-631-938-8127

 45-1 Ramsey Road, Shirley, NY 11967, USA

Tris-Bis PAGE



SEC-HPLC



 Tel: 1-631-559-9269 1-516-512-3133

 Email: info@creative-biomart.com  Fax: 1-631-938-8127

 45-1 Ramsey Road, Shirley, NY 11967, USA