

## Recombinant Human BANP protein, GST-tagged

Cat. No. BANP-070H Lot. No. (See product label)

### SPECIFICATION

**Product Overview** Human BANP full-length ORF ( NP\_060339.2, 1 a.a. - 469 a.a.) recombinant protein with GST-tag at N-terminal.

**Species** Human

**Source** Wheat Germ

**Description** This gene encodes a protein that binds to matrix attachment regions. The protein functions as a tumor suppressor and cell cycle regulator. Alternate transcriptional splice variants, encoding different isoforms, have been characterized. [provided by RefSeq]

**Form** 50 mM Tris-HCl, 10 mM reduced Glutathione, pH=8.0 in the elution buffer.

**Molecular Mass** 77.6 kDa

**AA Sequence**

```
MMSEHDLADV VQIAVEDLSPDHPV VLENHVVTDEDEPALKRQRLEINCQDPSIKSFL
YSINQTI CLR LDSIEAKLQALEATCKSLEEKLDLVTNKQHSPIQVPMVAGSPLGATQT
CNKVRCAVPGRRQNTIVVKVPGQEDSHHEDGESGSEASDSVSSCGQAGSQSIGSN
VTLITLNSEEDYPNGTWLGDENNPEMRVRC AIIPSDMLHISTNCR TA EKMA LLLDYL
FHREVQAVSNLSGQ GKHGKKQLDPLTIYGIRCHLFYKFGITESDWYRIKQSIDSKCRT
AWRRKQRGQSLAVKSF SR RTPNSSSYCPSEPM MSTPPPASELPQPQPQPALHYA
LANAQQVQIHQIGEDGQVQVIPQGH LHIAQVPQGEQVQITQDSEGNLQIHVVGQDG
QVLQGAQLIAVASSDPAAAGVDGSPLQGS DIQVQYVQLAPVSDHTAG AQTAEALQP
TLQPEMQLEHGAIQIQ
```

 Tel: 1-631-559-9269 1-516-512-3133

 Email: [info@creative-biomart.com](mailto:info@creative-biomart.com)  Fax: 1-631-938-8127

 45-1 Ramsey Road, Shirley, NY 11967, USA

<b>Notes</b>	Best use within three months from the date of receipt of this protein.
<b>Storage</b>	Store at -80 centigrade. Aliquot to avoid repeated freezing and thawing.
<b>Storage Buffer</b>	50 mM Tris-HCl, 10 mM reduced Glutathione, pH=8.0 in the elution buffer.

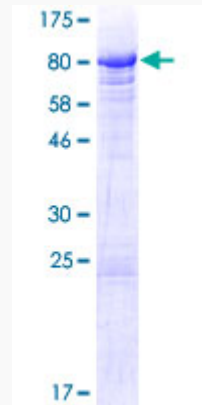
## GENE INFORMATION

<b>Gene Name</b>	BANP BTG3 associated nuclear protein [ Homo sapiens ]
<b>Official Symbol</b>	BANP
<b>Synonyms</b>	BANP; BTG3 associated nuclear protein; protein BANP; BEN domain containing 1; BEND1; DKFZp761H172; FLJ10177; FLJ20538; SMAR1; SMARBP1; BEN domain-containing protein 1; scaffold/matrix-associated region-1-binding protein;
<b>Gene ID</b>	54971
<b>mRNA Refseq</b>	NM_001173539
<b>Protein Refseq</b>	NP_001167010
<b>MIM</b>	611564
<b>UniProt ID</b>	Q8N9N5

 Tel: 1-631-559-9269 1-516-512-3133

 Email: [info@creative-biomart.com](mailto:info@creative-biomart.com)  Fax: 1-631-938-8127

 45-1 Ramsey Road, Shirley, NY 11967, USA



Tel: 1-631-559-9269 1-516-512-3133

Email: [info@creative-biomart.com](mailto:info@creative-biomart.com) Fax: 1-631-938-8127

45-1 Ramsey Road, Shirley, NY 11967, USA