

Recombinant Human BAP1 Protein, Myc/DDK-tagged, C13 and N15-labeled

Cat. No. BAP1-1090H **Lot. No.** (See product label)

SPECIFICATION

Product Overview	BAP1 MS Standard C13 and N15-labeled recombinant protein (NP_004647) with a C-terminal MYC/DDK tag, was expressed in HEK293 cells.
Species	Human
Source	HEK293
Description	This gene belongs to the ubiquitin C-terminal hydrolase subfamily of deubiquitinating enzymes that are involved in the removal of ubiquitin from proteins. The encoded enzyme binds to the breast cancer type 1 susceptibility protein (BRCA1) via the RING finger domain of the latter and acts as a tumor suppressor. In addition, the enzyme may be involved in regulation of transcription, regulation of cell cycle and growth, response to DNA damage and chromatin dynamics. Germline mutations in this gene may be associated with tumor predisposition syndrome (TPDS), which involves increased risk of cancers including malignant mesothelioma, uveal melanoma and cutaneous melanoma.
Molecular Mass	80.4 kDa
AA Sequence	MNKGWLELESDPGLFTLLVEDFGVKGQVEEIIDLQSKCQGPVYGFIFLFKWEERR SRRKVSTLVDDTSVIDDDIVNNMFFAHQLIPNSCATHALLSVLLNCSSVDLGPTLSRM KDFTKGFSPESKGYAIGNAPELAKAHNSHARPEPRHLPEKQNGLSAVRTMEAFHFV SYVPITGRLFELDGLKVYPIDHGPWGEDEEWTDKARRVIMERIGLATAGEPYHDIRF

 Tel: 1-631-559-9269 1-516-512-3133

 Email: info@creative-biomart.com  Fax: 1-631-938-8127

 45-1 Ramsey Road, Shirley, NY 11967, USA

NLMAVVPDRRIKYEARLHVLKVNQRQTVLEALQQLIRVTQPELIQTHKSQESQLPEESK
 SASNKSPVLLEANRAPAAASEGNHTDGAEAAAGSCAQAPSHSPNPKLVVKPPGSS
 LNGVHPNPTPIVQRLPAFLDNHNYAKSPMQEEEDLAAGVGRSRVPVRPPQQYSDD
 EDDYEDDEEDDVQNTNSALRYKKGKGTGKPGALSGSADGQLSVLQPNTINVLAEKLK
 ESQKDLSIPLSIKTSSGAGSPAVAVPHTSQPSPTPSNESTDTASEIGSAFNSPLRSPI
 RSANPTRPSSPVTSHISKVLFGEDDSLRLVDCIRYNRAVRDLGPVISTGLLHLAEDGV
 LSPLALTEGGKGSSPSIRPIQGSQGSSSPVEKEVVEATDSREKTGMVRPGEPLSGE
 KYSPKELLALLKCVEAEIANYEACLKEEVEKRKKFKIDDQRRTHNYDEFICTFISMLAQ
 EGMLANLVEQNISVRRRQGVSIGRLHKQRKPD RRKRSRPYKAKRQTRTRPLEQKLI
 SEEDLAANDILDYKDDDDKV

Purity > 80% as determined by SDS-PAGE and Coomassie blue staining

Stability Stable for 3 months from receipt of products under proper storage and handling conditions.

Storage Store at -80 centigrade. Avoid repeated freeze-thaw cycles.

Concentration 50 µg/mL as determined by BCA

Storage Buffer 100 mM glycine, 25 mM Tris-HCl, pH 7.3.

GENE INFORMATION

Gene Name BAP1 BRCA1 associated protein 1 [Homo sapiens (human)]

Official Symbol BAP1

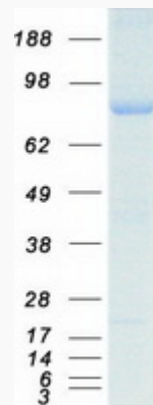
Synonyms BAP1; BRCA1 associated protein-1 (ubiquitin carboxy-terminal hydrolase); ubiquitin carboxyl-terminal hydrolase BAP1; hucep 6; KIAA0272; UCHL2; cerebral protein 6; cerebral protein-13; TPDS; hucep-6; HUCEP-13; FLJ35406; FLJ37180;

 Tel: 1-631-559-9269 1-516-512-3133

 Email: info@creative-biomart.com  Fax: 1-631-938-8127

 45-1 Ramsey Road, Shirley, NY 11967, USA

DKFZp686N04275;

Gene ID 8314**mRNA Refseq** NM_004656**Protein Refseq** NP_004647**MIM** 603089**UniProt ID** Q92560**SDS-PAGE** Tel: 1-631-559-9269 1-516-512-3133 Email: info@creative-biomart.com  Fax: 1-631-938-8127 45-1 Ramsey Road, Shirley, NY 11967, USA