

# Recombinant Full Length Human BAP1 Protein, C-Flag-tagged

Cat. No. BAP1-1599HFL Lot. No. (See product label)

## SPECIFICATION

<b>Product Overview</b>	Recombinant Full Length Human BAP1 Protein, fused to Flag-tag at C-terminus, was expressed in Mammalian cells.
<b>Species</b>	Human
<b>Source</b>	Mammalian Cells
<b>Description</b>	This gene belongs to the ubiquitin C-terminal hydrolase subfamily of deubiquitinating enzymes that are involved in the removal of ubiquitin from proteins. The encoded enzyme binds to the breast cancer type 1 susceptibility protein (BRCA1) via the RING finger domain of the latter and acts as a tumor suppressor. In addition, the enzyme may be involved in regulation of transcription, regulation of cell cycle and growth, response to DNA damage and chromatin dynamics. Germline mutations in this gene may be associated with tumor predisposition syndrome (TPDS), which involves increased risk of cancers including malignant mesothelioma, uveal melanoma and cutaneous melanoma.
<b>Form</b>	25 mM Tris HCl, pH 7.3, 100 mM glycine, 10% glycerol.
<b>Molecular Mass</b>	80.2 kDa
<b>AA Sequence</b>	MNKGWLELESDPGLFTLLVEDFGVKGVQVEEIYDLQSKCQGPVYGFIFLFWIEERR SRRKVSTLVDDTS VIDDDIVNNMFFAHQLIPNSCATHALLSVLLNCSSVDLGP TLSR MKDFTKGFSPESKGYAIGNAPELAKA HNSHARPEPRHLPEKQNGLSAVRTMEAFH FVSYPITGRLFELDGLKVYPIDHGPWGEDEEWTDKARRVI MERIGLATAGEPYHDI

Tel: 1-631-559-9269 1-516-512-3133

Email: [info@creative-biomart.com](mailto:info@creative-biomart.com) Fax: 1-631-938-8127

45-1 Ramsey Road, Shirley, NY 11967, USA

RFNLMAVVPDRRIKYEARLHVLKVNQRQTVLEALQQLIRVTQPELIQTHKSQESQ LPE  
 ESKSASNKSPLVLEANRAPAAASEGNHTDGAEAAAGSCAQAPSHSPPNPKLVVKPP  
 GSSLNGVHPNP TPIVQRLPAFLDNHNYAKSPMQEEEDLAAGVGRSRVPVVRPPQQY  
 SDEDDYEDDEEDDVQNTNSALRYKG KGTGKPGALSGSADGQLSVLQPNTINVLA  
 EKLKESQKDLIPLSIKTSSGAGSPAVAVPHTSQPSPTPSN ESTDTASEIGSAFNSPL  
 RSPIRSANPTRPSSPVTSHISKVLFGEDDSLRLVDCIRYNRAVRDLGPVISTG LLHLA  
 EDGVLSPALTEGGKGSPPSIRPIQGSQGSPPVEKEVVEATDSREKTGMVRPGEF  
 LSGEKYSPPK ELLALLKCVEAEIANYEACLKEEVEKRKKFKIDDQRRTHNYDEFICTFIS  
 MDAQEGMLANLVEQNISVRR  
 RQGVSIGRLHKQRKPDRRKRSRPYKAKRQTRTRPLEQKLISEEDLAANDILDYKDDD  
 DKV

**Purity** > 80% as determined by SDS-PAGE and Coomassie blue staining.

**Stability** Stable for 12 months from the date of receipt of the product under proper storage and handling conditions. Avoid repeated freeze-thaw cycles.

**Storage** Store at -80 centigrade.

**Concentration** >50 ug/mL as determined by microplate BCA method.

**Preparation** Recombinant protein was captured through anti-DDK affinity column followed by conventional chromatography steps.

**Protein Families** Druggable Genome, Protease

**Full Length** Full L.

## GENE INFORMATION

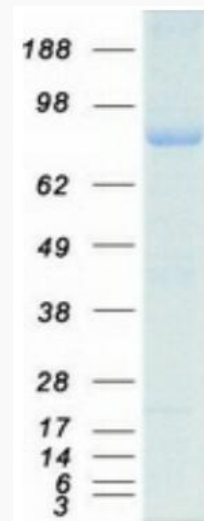
**Gene Name** [BAP1 BRCA1 associated protein 1 \[ Homo sapiens \(human\) \]](#)

 Tel: 1-631-559-9269 1-516-512-3133

 Email: [info@creative-biomart.com](mailto:info@creative-biomart.com)  Fax: 1-631-938-8127

 45-1 Ramsey Road, Shirley, NY 11967, USA

<b>Official Symbol</b>	BAP1
<b>Synonyms</b>	UVM2; KURIS; TPDS1; UCHL2; hucep-6; HUCEP-13
<b>Gene ID</b>	8314
<b>mRNA Refseq</b>	NM_004656.4
<b>Protein Refseq</b>	NP_004647.1
<b>MIM</b>	603089
<b>UniProt ID</b>	Q92560



Coomassie blue staining of purified BAP1 protein.

 Tel: 1-631-559-9269 1-516-512-3133

 Email: [info@creative-biomart.com](mailto:info@creative-biomart.com)  Fax: 1-631-938-8127

 45-1 Ramsey Road, Shirley, NY 11967, USA