

# Recombinant Full Length Human BARD1 Protein, Fc tagged

Cat. No. BARD1-03HF Lot. No. (See product label)

## SPECIFICATION

<b>Product Overview</b>	Recombinant Full Length Human BARD1 Protein with Fc tag was expressed in E. coli.
<b>Species</b>	Human
<b>Source</b>	E.coli
<b>Description</b>	<p>This gene encodes a protein which interacts with the N-terminal region of BRCA1. In addition to its ability to bind BRCA1 in vivo and in vitro, it shares homology with the 2 most conserved regions of BRCA1: the N-terminal RING motif and the C-terminal BRCT domain. The RING motif is a cysteine-rich sequence found in a variety of proteins that regulate cell growth, including the products of tumor suppressor genes and dominant protooncogenes. This protein also contains 3 tandem ankyrin repeats. The BARD1/BRCA1 interaction is disrupted by tumorigenic amino acid substitutions in BRCA1, implying that the formation of a stable complex between these proteins may be an essential aspect of BRCA1 tumor suppression. This protein may be the target of oncogenic mutations in breast or ovarian cancer. Multiple alternatively spliced transcript variants encoding different isoforms have been found for this gene.</p>
<b>Molecular Mass</b>	The protein has a calculated MW of 113 kDa.
<b>AA Sequence</b>	<p>MPDNRQPRNRQPRIRSGNEPR SAPAMEPDGRGAWAHSRAALDRLEKLLRCSRCT          NILREPVCLGGCEHIFCSNCVSDCIGTGCPVCYTPAWIQDLKINRQLDSMIQLCSKLR          NLLHDNELSDLKEDKPRKSLFNDAGNKKNSIKMWFSPRSKKVRYVVS KASVQTQPAI</p>

 Tel: 1-631-559-9269 1-516-512-3133

 Email: [info@creative-biomart.com](mailto:info@creative-biomart.com)  Fax: 1-631-938-8127

 45-1 Ramsey Road, Shirley, NY 11967, USA

KKDASAAQQDSYEFVSPSPPADVSERAKKASARSGKKQKKKTLAEINQKWNLEAEKE  
 DGEFDSKEESKQKLVSFCSQPSVISSPQINGEIDLLASGSLTESECFGSLTEVSLPLA  
 EQIESPDTKSRNEVVTPEKVCKNYLTSKKSLENNNGKRGHHRNLSSPISKRCRTSIL  
 STSGDFVKQTVPSENIPLPECSSPPSCKRKVGGTSGRKNSNMSDEFISLSPGTPPST  
 LSSSSYRRVMSSPSAMKLLPNMAVKRNHRGETLLHIASIKGDIPSVEYLLQNGSDPN  
 VKDHAGWTPLHEACNHGHLKVVELLLQHKALVNTTGYQNDSPHDAKNGHVDIVK  
 LLLSYGASRNAVNIFGLRPVDYTDDESMKSLLLLPEKNESSSASHCSVMNTGQRRD  
 GPLVLIGSGLSSEQQKMLSELAVILKAKKYTEFDSTVTHVVVPGDAVQSTLKCMLGIL  
 NGCWILKFEWVKACLRRKVCEQEEKYEIPEGPRRSRLNREQLLPKLFDGCYFYLWG  
 TFKHHPKDNLIKLVTAGGGQILSRKPKPDSVDTQTINTVAYHARPDSQRFCTQYIIY  
 EDLCNYHPERVRQGKVVWVWAPSSWFIDCVMSFELLPLDSGGGGSGGGGGSGGGGSE  
 PKSCDKTHTCPPCPAPPELLGGPSVFLFPPKPKDTLMISRTPEVTCVVVDVSHEDPEV  
 KFNWYVDGVEVHNAKTKPREEQYNSTYRVVSVLTVLHQDWLNGKEYKCKVSNKAL  
 PAPIEKTISKAKGQPREPQVYTLPPSRDELTKNQVSLTCLVKGFYPSDIAVEWESNG  
 QPENNYKTTTPVLDSDGSFFLYSKLTVDKSRWQQGNVFCFSVMHEALHNHYTQKS  
 LSLSPGK

<b>Purity</b>	> 80% by SDS-PAGE
<b>Storage</b>	Store it under sterile conditions at -20 to -80 centigrade. It is recommended that the protein be aliquoted for optimal storage. Avoid repeated freeze-thaw cycles.
<b>Concentration</b>	0.44 mg/mL by BCA
<b>Storage Buffer</b>	Sterile PBS, pH 7.4, 1% SKL
<b>Full Length</b>	Full L.

## GENE INFORMATION

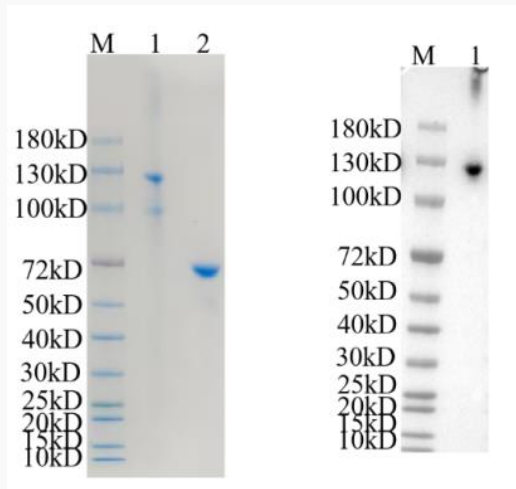
<b>Gene Name</b>	BARD1 BRCA1 associated RING domain 1 [ Homo sapiens (human) ]
<b>Official Symbol</b>	BARD1
<b>Synonyms</b>	BARD1; BRCA1 associated RING domain 1; BRCA1-associated RING domain protein 1; BARD-1; BRCA1-associated RING domain gene 1; BRCA1 associated RING domain 1 isoform eta; BRCA1 associated RING domain 1 isoform phi; BRCA1 associated RING domain 1 isoform alfa; BRCA1 associated RING domain 1 isoform beta; BRCA1 associated RING domain 1 isoform delta; BRCA1 associated RING domain 1 isoform gamma; BRCA1 associated RING domain 1 isoform epsilon
<b>Gene ID</b>	580
<b>mRNA Refseq</b>	NM_000465
<b>Protein Refseq</b>	NP_000456
<b>MIM</b>	601593
<b>UniProt ID</b>	Q99728

 Tel: 1-631-559-9269 1-516-512-3133

 Email: [info@creative-biomart.com](mailto:info@creative-biomart.com)  Fax: 1-631-938-8127

 45-1 Ramsey Road, Shirley, NY 11967, USA

**Reducing 12% SDS-PAGE (CBB stained) and WB (Goat Anti-Human IgG Antibody) analysis profiles of purified BARD1.**



1. BARD1
2. BSA

 Tel: 1-631-559-9269 1-516-512-3133

 Email: [info@creative-biomart.com](mailto:info@creative-biomart.com)  Fax: 1-631-938-8127

 45-1 Ramsey Road, Shirley, NY 11967, USA