

Recombinant Human BARHL1 Protein, Myc/DDK-tagged, C13 and N15-labeled

Cat. No. BARHL1-2476H **Lot. No.** (See product label)

SPECIFICATION

Product Overview	BARHL1 MS Standard C13 and N15-labeled recombinant protein (NP_064448) with a C-terminal MYC/DDK tag, was expressed in HEK293 cells.
Species	Human
Source	HEK293
Description	BARHL1 (BarH Like Homeobox 1) is a Protein Coding gene. Diseases associated with BARHL1 include Deafness, Autosomal Recessive 27 and Medulloblastoma. Gene Ontology (GO) annotations related to this gene include sequence-specific DNA binding and proximal promoter DNA-binding transcription activator activity, RNA polymerase II-specific. An important paralog of this gene is BARHL2.
Molecular Mass	34.9 kDa
AA Sequence	MEGSNGFGIDSILSHRAGSPALPKGDPLLGDRCRSPLELSRSESSSDCSPASPGR DCLETGTTPRPGGASGPGLDLQPGQLSAPAQSRTVTSSFLIRDILADCKPLAACAP YSSSGQPAPEPGGRLAAKAAEDFRDKLDSGNSASSDSEYKVKKEEGDREISSRD SPPVRLKKPRKARTAFTHQLAQLERSFERQKYLVSQDRMELAASLNLTDTQVKTW YQNRRTKWKQRQTAVGLELLAEAGNYSALQRMFSPYFYPQSLVSNLDPGAALYLYR GPSAPPPALQRPLVPRILIHGLQGASEPPPPLPLAGVLPRAAQPRTTRTRPLEQKLIS EEDLAANDILDYKDDDDKV
Purity	> 80% as determined by SDS-PAGE and Coomassie blue staining

 Tel: 1-631-559-9269 1-516-512-3133

 Email: info@creative-biomart.com  Fax: 1-631-938-8127

 45-1 Ramsey Road, Shirley, NY 11967, USA

Stability	Stable for 3 months from receipt of products under proper storage and handling conditions.
Storage	Store at -80 centigrade. Avoid repeated freeze-thaw cycles.
Concentration	50 µg/mL as determined by BCA
Storage Buffer	100 mM glycine, 25 mM Tris-HCl, pH 7.3.

GENE INFORMATION

Gene Name	BARHL1 BarH-like homeobox 1 [Homo sapiens (human)]
Official Symbol	BARHL1
Synonyms	BARHL1; BarH-like homeobox 1; BarH (Drosophila) like 1; barH-like 1 homeobox protein;
Gene ID	56751
mRNA Refseq	NM_020064
Protein Refseq	NP_064448
MIM	605211
UniProt ID	Q9BZE3

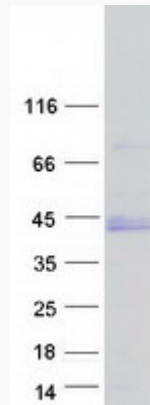
 Tel: 1-631-559-9269 1-516-512-3133

 Email: info@creative-biomart.com  Fax: 1-631-938-8127

 45-1 Ramsey Road, Shirley, NY 11967, USA



SDS-PAGE



Tel: 1-631-559-9269 1-516-512-3133

Email: info@creative-biomart.com Fax: 1-631-938-8127

45-1 Ramsey Road, Shirley, NY 11967, USA