

Recombinant Human BARHL2 Protein, Myc/DDK-tagged, C13 and N15-labeled

Cat. No. BARHL2-3947H **Lot. No.** (See product label)

SPECIFICATION

Product Overview	BARHL2 MS Standard C13 and N15-labeled recombinant protein (NP_064447) with a C-terminal MYC/DDK tag, was expressed in HEK293 cells.
Species	Human
Source	HEK293
Description	BARHL2 (BarH Like Homeobox 2) is a Protein Coding gene. Gene Ontology (GO) annotations related to this gene include DNA-binding transcription factor activity and proximal promoter DNA-binding transcription activator activity, RNA polymerase II-specific. An important paralog of this gene is BARHL1.
Molecular Mass	42 kDa
AA Sequence	<p>MTMEGASGSSFGIDTILSSASSGSPGMMNGDFRPLGEARTADFRSQATPSPCSEID TVGTAPSSPISVTMEPPEPHLVADATQHHLHHSQQPPPPAAAPTQSLQPLPQQQ QPLPPQPPPPPPQQLGSAASAPRTSTSSFLIKDILGDSKPLAACAPYSTSVSSPHH TPKQESNAVHESFRPKLEQEDSKTKLDKREDSQSDIKCHGTKEEGDREITSSRESPP VRAKKPRKARTAFSDHQLNQLERSFERQKYLVSQDRMDLAAALNLTDQVKTWYQ NRRTKWKRQTAVGLELLAEAGNYSALQRMFSPYFYHPSLLGSMSTTAAAAAAA MYSSMYRTPPAPHPQLQRPLVPRVLIHGLGPGGQPALNPLSSPIPGTPHPRTTRTRPL EQKLISEEDLAANDILDYKDDDDKV</p>
Purity	> 80% as determined by SDS-PAGE and Coomassie blue staining

 Tel: 1-631-559-9269 1-516-512-3133

 Email: info@creative-biomart.com  Fax: 1-631-938-8127

 45-1 Ramsey Road, Shirley, NY 11967, USA

Stability	Stable for 3 months from receipt of products under proper storage and handling conditions.
Storage	Store at -80 centigrade. Avoid repeated freeze-thaw cycles.
Concentration	50 µg/mL as determined by BCA
Storage Buffer	100 mM glycine, 25 mM Tris-HCl, pH 7.3.

GENE INFORMATION

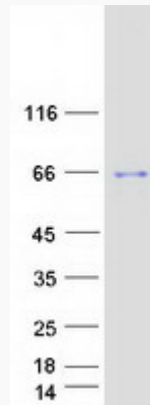
Gene Name	BARHL2 BarH-like homeobox 2 [Homo sapiens (human)]
Official Symbol	BARHL2
Synonyms	BARHL2; BarH-like homeobox 2; BarH (Drosophila) like 2; barH-like 2 homeobox protein;
Gene ID	343472
mRNA Refseq	NM_020063
Protein Refseq	NP_064447
MIM	605212
UniProt ID	Q9NY43

 Tel: 1-631-559-9269 1-516-512-3133

 Email: info@creative-biomart.com  Fax: 1-631-938-8127

 45-1 Ramsey Road, Shirley, NY 11967, USA

SDS-PAGE



 Tel: 1-631-559-9269 1-516-512-3133

 Email: info@creative-biomart.com  Fax: 1-631-938-8127

 45-1 Ramsey Road, Shirley, NY 11967, USA