

Recombinant Human BATF Protein, Myc/DDK-tagged, C13 and N15-labeled

Cat. No. BATF-5417H **Lot. No.** (See product label)

SPECIFICATION

Product Overview	BATF MS Standard C13 and N15-labeled recombinant protein (NP_006390) with a C-terminal MYC/DDK tag, was expressed in HEK293 cells.
Species	Human
Source	HEK293
Description	The protein encoded by this gene is a nuclear basic leucine zipper protein that belongs to the AP-1/ATF superfamily of transcription factors. The leucine zipper of this protein mediates dimerization with members of the Jun family of proteins. This protein is thought to be a negative regulator of AP-1/ATF transcriptional events.
Molecular Mass	14.1 kDa
AA Sequence	MPHSSDSSDSSFSRSPPPGKQDSSDDVRRVQRREKNRIAAQKSRQRQTQKADTLH LESEDLKQNAALRKEIKQLTEELKYFTSVLNSHEPLCSVLAASTPSPPEVVYSAHAF HQP HVSSPRFQPTRTRPLEQKLISEEDLAANDILDYKDDDDKV
Purity	> 80% as determined by SDS-PAGE and Coomassie blue staining
Stability	Stable for 3 months from receipt of products under proper storage and handling conditions.
Storage	Store at -80 centigrade. Avoid repeated freeze-thaw cycles.

 Tel: 1-631-559-9269 1-516-512-3133

 Email: info@creative-biomart.com  Fax: 1-631-938-8127

 45-1 Ramsey Road, Shirley, NY 11967, USA

Concentration 50 µg/mL as determined by BCA

Storage Buffer 100 mM glycine, 25 mM Tris-HCl, pH 7.3.

GENE INFORMATION

Gene Name [BATF basic leucine zipper ATF-like transcription factor \[Homo sapiens \(human\) \]](#)

Official Symbol [BATF](#)

Synonyms BATF; basic leucine zipper transcription factor, ATF-like; basic leucine zipper transcriptional factor ATF-like; activating transcription factor B; B ATF; BATF1; SF HT activated gene 2; SFA 2; SF-HT-activated gene 2 protein; B-cell-activating transcription factor; SFA2; B-ATF; SFA-2;

Gene ID [10538](#)

mRNA Refseq [NM_006399](#)

Protein Refseq [NP_006390](#)

MIM [612476](#)

UniProt ID [Q16520](#)

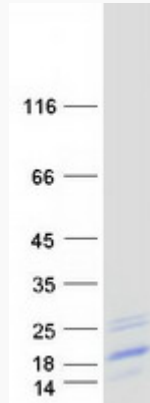
 Tel: 1-631-559-9269 1-516-512-3133

 Email: info@creative-biomart.com  Fax: 1-631-938-8127

 45-1 Ramsey Road, Shirley, NY 11967, USA



SDS-PAGE



Tel: 1-631-559-9269 1-516-512-3133

Email: info@creative-biomart.com Fax: 1-631-938-8127

45-1 Ramsey Road, Shirley, NY 11967, USA