

Recombinant Human BATF2 Protein, GST-tagged

Cat. No. BATF2-4344H **Lot. No.** (See product label)

SPECIFICATION

| | |
|-------------------------|--|
| Product Overview | Human MGC20410 full-length ORF (AAH12330, 1 a.a. - 189 a.a.) recombinant protein with GST-tag at N-terminal. |
| Species | Human |
| Source | Wheat Germ |
| Description | BATF2 (Basic Leucine Zipper ATF-Like Transcription Factor 2) is a Protein Coding gene. Diseases associated with BATF2 include Cercarial Dermatitis. GO annotations related to this gene include transcription factor activity, sequence-specific DNA binding and sequence-specific DNA binding. An important paralog of this gene is BATF. |
| Molecular Mass | 46.53 kDa |
| AA Sequence | MDCASCSAPGLLGCVWDQAEGLLGPQPQGHGCREQLELFQTPGSCYPAQPLSPG PQPHDSPSLLQCPLPSLSLGPVVAEPPVQLSPSPLLFASHTGSSLQGSSSKLSALQ PSLTAQTAPPQPLELEHPTRGKLGSSPDNPSSALGLARLQSREHKPALSAAATWQGL VVDPSHPHLLAFPLLSSAQVHF |
| Applications | Enzyme-linked Immunoabsorbent Assay Western Blot (Recombinant protein) Antibody Production Protein Array |

 Tel: 1-631-559-9269 1-516-512-3133

 Email: info@creative-biomart.com  Fax: 1-631-938-8127

 45-1 Ramsey Road, Shirley, NY 11967, USA

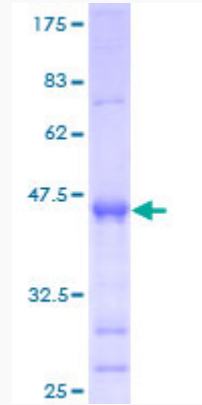
| | |
|-------------------------|---|
| Notes | Best use within three months from the date of receipt of this protein. |
| Storage | Store at -80 centigrade. Aliquot to avoid repeated freezing and thawing. |
| Storage Buffer | 50 mM Tris-HCl, 10 mM reduced Glutathione, pH=8.0 in the elution buffer. |
| GENE INFORMATION | |
| Gene Name | BATF2 basic leucine zipper transcription factor, ATF-like 2 [Homo sapiens] |
| Official Symbol | BATF2 |
| Synonyms | BATF2; basic leucine zipper transcription factor, ATF-like 2; basic leucine zipper transcriptional factor ATF-like 2; MGC20410; B-ATF-2; suppressor of AP-1 regulated by IFN; SARI; |
| Gene ID | 116071 |
| mRNA Refseq | NM_138456 |
| Protein Refseq | NP_612465 |
| UniProt ID | Q8N1L9 |

 Tel: 1-631-559-9269 1-516-512-3133

 Email: info@creative-biomart.com  Fax: 1-631-938-8127

 45-1 Ramsey Road, Shirley, NY 11967, USA

**Quality Control
Testing**



12.5% SDS-PAGE Stained with Coomassie Blue

 Tel: 1-631-559-9269 1-516-512-3133

 Email: info@creative-biomart.com  Fax: 1-631-938-8127

 45-1 Ramsey Road, Shirley, NY 11967, USA