

Recombinant Full Length Human BATF3 Protein, C-Flag-tagged

Cat. No. BATF3-1293HFL **Lot. No.** (See product label)

SPECIFICATION

Product Overview	Recombinant Full Length Human BATF3 Protein, fused to Flag-tag at C-terminus, was expressed in Mammalian cells.
Species	Human
Source	Mammalian Cells
Description	This gene encodes a member of the basic leucine zipper protein family. The encoded protein functions as a transcriptional repressor when heterodimerizing with JUN. The protein may play a role in repression of interleukin-2 and matrix metalloproteinase-1 transcription.
Form	25 mM Tris HCl, pH 7.3, 100 mM glycine, 10% glycerol.
Molecular Mass	14.3 kDa
AA Sequence	MSQGLPAAGSVLQRSVAAPGNQPQPQPQQSPEDDDRKVRREKNRVAAQRSRK KQTQKADKLHEEYESL EQENTMLRREIGKLTEELKHLTEALKEHEKMCPLLLCPMNFVPPRPDPVAGCLPR TRTRPLEQKLISEEDLAANDILDYKDDDDKV
Purity	> 80% as determined by SDS-PAGE and Coomassie blue staining.
Stability	Stable for 12 months from the date of receipt of the product under proper storage and

 Tel: 1-631-559-9269 1-516-512-3133

 Email: info@creative-biomart.com  Fax: 1-631-938-8127

 45-1 Ramsey Road, Shirley, NY 11967, USA

handling conditions. Avoid repeated freeze-thaw cycles.

Storage Store at -80 centigrade.

Concentration >50 ug/mL as determined by microplate BCA method.

Preparation Recombinant protein was captured through anti-DDK affinity column followed by conventional chromatography steps.

Full Length Full L.

GENE INFORMATION

Gene Name [BATF3 basic leucine zipper ATF-like transcription factor 3 \[Homo sapiens \(human\) \]](#)

Official Symbol [BATF3](#)

Synonyms JDP1; SNFT; JUNDM1

Gene ID [55509](#)

mRNA Refseq [NM_018664.3](#)

Protein Refseq [NP_061134.1](#)

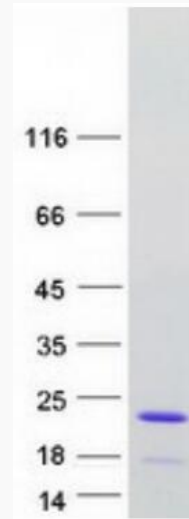
MIM [612470](#)

UniProt ID [Q9NR55](#)

 Tel: 1-631-559-9269 1-516-512-3133

 Email: info@creative-biomart.com  Fax: 1-631-938-8127

 45-1 Ramsey Road, Shirley, NY 11967, USA



Coomassie blue staining of purified BATF3 protein.

 Tel: 1-631-559-9269 1-516-512-3133

 Email: info@creative-biomart.com  Fax: 1-631-938-8127

 45-1 Ramsey Road, Shirley, NY 11967, USA