

## Recombinant Human BAX protein, GST-tagged

Cat. No. BAX-26650TH Lot. No. (See product label)

### SPECIFICATION

<b>Product Overview</b>	Recombinant Human BAX fused with GST tag at N-terminal was expressed in E. coli.
<b>Species</b>	Human
<b>Source</b>	E.coli
<b>Description</b>	BAX is a proapoptotic protein of the BCL2 protein family. BAX forms a heterodimer with BCL2 and functions as an apoptotic activator. BAX interacts with and increases the opening of the mitochondrial voltage-dependent anion channel (VDAC), which leads to the loss in the mitochondrial membrane potential and the release of cytochrome c. The expression of BAX gene is regulated by the tumor suppressor p53 and BAX has been shown to be involved in p53-mediated apoptosis. Multiple alternatively spliced transcript variants, which encode different isoforms, have been reported for this gene.
<b>Form</b>	50mM Tris-HCl, pH 7.5, 150mM NaCl, 10mM glutathione, 0.1mM EDTA, 0.25mM DTT, 0.1mM PMSF, 25% glycerol.
<b>Molecular Mass</b>	~49 kDa
<b>Purity</b>	>75%
<b>Applications</b>	Western Blot
<b>Stability</b>	1 year at -70 centigrade from the date of shipment

 Tel: 1-631-559-9269 1-516-512-3133

 Email: [info@creative-biomart.com](mailto:info@creative-biomart.com)  Fax: 1-631-938-8127

 45-1 Ramsey Road, Shirley, NY 11967, USA

**Storage** Store product at  $-70$  centigrade. For optimal storage, aliquot target into smaller quantities after centrifugation and store at recommended temperature. For most favorable performance, avoid repeated handling and multiple freeze/thaw cycles.

**Concentration** 0.2 $\mu$ g/ $\mu$ l

## GENE INFORMATION

**Gene Name** BAX BCL2-associated X protein [ Homo sapiens ]

**Official Symbol** BAX

**Synonyms** BAX; BCL2-associated X protein; apoptosis regulator BAX; BCL2L4; bcl2-L-4; bcl-2-like protein 4; BCL2-associated X protein omega;

**Gene ID** 581

**mRNA Refseq** NM\_004324

**Protein Refseq** NP\_004315

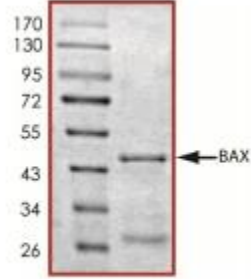
**MIM** 600040

**UniProt ID** Q07812

 Tel: 1-631-559-9269 1-516-512-3133

 Email: [info@creative-biomart.com](mailto:info@creative-biomart.com)  Fax: 1-631-938-8127

 45-1 Ramsey Road, Shirley, NY 11967, USA



 Tel: 1-631-559-9269 1-516-512-3133

 Email: [info@creative-biomart.com](mailto:info@creative-biomart.com)  Fax: 1-631-938-8127

 45-1 Ramsey Road, Shirley, NY 11967, USA