

# Recombinant Human BBC3 Protein, Myc/DDK-tagged, C13 and N15-labeled

**Cat. No.** BBC3-5229H    **Lot. No.** (See product label)

## SPECIFICATION

<b>Product Overview</b>	BBC3 MS Standard C13 and N15-labeled recombinant protein (NP_055232) with a C-terminal MYC/DDK tag, was expressed in HEK293 cells.
<b>Species</b>	Human
<b>Source</b>	HEK293
<b>Description</b>	This gene encodes a member of the BCL-2 family of proteins. This family member belongs to the BH3-only pro-apoptotic subclass. The protein cooperates with direct activator proteins to induce mitochondrial outer membrane permeabilization and apoptosis. It can bind to anti-apoptotic Bcl-2 family members to induce mitochondrial dysfunction and caspase activation. Because of its pro-apoptotic role, this gene is a potential drug target for cancer therapy and for tissue injury. Alternative splicing results in multiple transcript variants.
<b>Molecular Mass</b>	20.4 kDa
<b>AA Sequence</b>	MARARQEGSSPEPVEGLARDGPRPFPLGRLVPSAVSCGLCEPGLAAAPAAPTLLPA AYLCAPTAPPVTAALGGSRWPGGPRSRPRGPRPDGPQPSLSLAEQHLESPVPSA PGALAGGPTQAAPGVRGEEEQWAREIGAQLRRMADDLNAQYERRRQEEQQRHRP SPWRVLYNLIMGLLPLPRGHRAPEMENRTRTRPLEQKLISEEDLAANDILDYKDDDD KV
<b>Purity</b>	> 80% as determined by SDS-PAGE and Coomassie blue staining

 Tel: 1-631-559-9269    1-516-512-3133

 Email: [info@creative-biomart.com](mailto:info@creative-biomart.com)     Fax: 1-631-938-8127

 45-1 Ramsey Road, Shirley, NY 11967, USA

<b>Stability</b>	Stable for 3 months from receipt of products under proper storage and handling conditions.
<b>Storage</b>	Store at -80 centigrade. Avoid repeated freeze-thaw cycles.
<b>Concentration</b>	50 µg/mL as determined by BCA
<b>Storage Buffer</b>	100 mM glycine, 25 mM Tris-HCl, pH 7.3.

## GENE INFORMATION

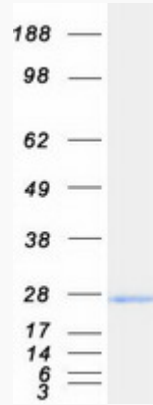
<b>Gene Name</b>	BBC3 BCL2 binding component 3 [ Homo sapiens (human) ]
<b>Official Symbol</b>	BBC3
<b>Synonyms</b>	BBC3; BCL2 binding component 3; bcl-2-binding component 3; JFY1; PUMA; p53 up-regulated modulator of apoptosis; JFY-1; FLJ42994;
<b>Gene ID</b>	27113
<b>mRNA Refseq</b>	NM_014417
<b>Protein Refseq</b>	NP_055232
<b>MIM</b>	605854
<b>UniProt ID</b>	Q96PG8

 Tel: 1-631-559-9269 1-516-512-3133

 Email: [info@creative-biomart.com](mailto:info@creative-biomart.com)  Fax: 1-631-938-8127

 45-1 Ramsey Road, Shirley, NY 11967, USA

**SDS-PAGE**



 Tel: 1-631-559-9269 1-516-512-3133

 Email: [info@creative-biomart.com](mailto:info@creative-biomart.com)  Fax: 1-631-938-8127

 45-1 Ramsey Road, Shirley, NY 11967, USA