

# Recombinant Human BBOX1 protein(1-387aa), His&Myc-tagged

Cat. No. BBOX1-1049H Lot. No. (See product label)

## SPECIFICATION

<b>Product Overview</b>	Recombinant Human BBOX1 protein(O75936)(1-387aa), fused with N-terminal His tag and C-terminal Myc tag, was expressed in E.coli.
<b>Species</b>	Human
<b>Source</b>	E.coli
<b>ProteinLength</b>	1-387aa
<b>Form</b>	If the delivery form is liquid, the default storage buffer is Tris/PBS-based buffer, 5%-50% glycerol. If the delivery form is lyophilized powder, the buffer before lyophilization is Tris/PBS-based buffer, 6% Trehalose, pH 8.0.
<b>Molecular Mass</b>	52.2 kDa
<b>Purity</b>	Greater than 90% as determined by SDS-PAGE.
<b>Storage</b>	Store at -20°C/-80°C upon receipt, aliquoting is necessary for mutiple use. Avoid repeated freeze-thaw cycles.
<b>Reconstitution</b>	We recommend that this vial be briefly centrifuged prior to opening to bring the contents to the bottom. Please reconstitute protein in deionized sterile water to a concentration of 0.1-1.0 mg/mL.We recommend to add 5-50% of glycerol (final concentration) and aliquot for long-term storage at -20°C/-80°C.

 Tel: 1-631-559-9269 1-516-512-3133

 Email: [info@creative-biomart.com](mailto:info@creative-biomart.com)  Fax: 1-631-938-8127

 45-1 Ramsey Road, Shirley, NY 11967, USA



**AA Sequence**

MACTIQKAEALDGAHLMQILWYDEEESLYPAVWLRDNCPCSDCYLDSAKARKLLVE  
ALDVNIGIKGLIFDRKKVYITWPDEHYSEFQADWLKKRCFSKQARAKLQRELFFPEC  
QYWGSELQLPTLDFEDVLRIDEHAYKWLSTLKKVGIVRLTGASDKPGEVSKLGKRM  
GFLYLTFYGHWTWQVQDKIDANNVAYTTGKLSFHTDYPALHHPGQVLLHCIKQTVT  
GDSEIVDGFNVCQKLKNNPQAFQILSSTFVDFTDIGVDYCDFSVQSKHKIIELEDDKG  
QVVRINFNNATRDITFDVPERVQPFYAALKEFVDMNSKESKFTFKMNPQDVITFD  
NWRLLHGRRSYEAGTEISRHLLEGAYADWDVMSRLRILRQRVNGN

**GENE INFORMATION**

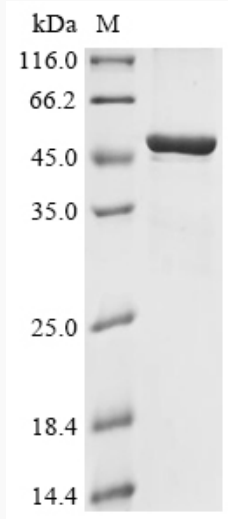
<b>Gene Name</b>	BBOX1 butyrobetaine (gamma), 2-oxoglutarate dioxygenase (gamma-butyrobetaine hydroxylase) 1 [ Homo sapiens ]
<b>Official Symbol</b>	BBOX1
<b>Synonyms</b>	BBOX1; butyrobetaine (gamma), 2-oxoglutarate dioxygenase (gamma-butyrobetaine hydroxylase) 1; BBOX; gamma-butyrobetaine dioxygenase; BBH; G BBH; gamma BBH; gamma-butyrobetaine hydroxylase; gamma-butyrobetaine,2-oxoglutarate dioxygenase 1; G-BBH; gamma-BBH;
<b>Gene ID</b>	8424
<b>mRNA Refseq</b>	NM_003986
<b>Protein Refseq</b>	NP_003977
<b>MIM</b>	603312
<b>UniProt ID</b>	O75936

Tel: 1-631-559-9269 1-516-512-3133

Email: [info@creative-biomart.com](mailto:info@creative-biomart.com) Fax: 1-631-938-8127

45-1 Ramsey Road, Shirley, NY 11967, USA

**SDS-PAGE**



 Tel: 1-631-559-9269 1-516-512-3133

 Email: [info@creative-biomart.com](mailto:info@creative-biomart.com)  Fax: 1-631-938-8127

 45-1 Ramsey Road, Shirley, NY 11967, USA