

Recombinant Full Length Human BBS1 Protein, His&SUMO tagged

Cat. No. BBS1-01HFL Lot. No. (See product label)

SPECIFICATION

Product Overview	Recombinant Full Length Human BBS1 Protein with N-His&SUMO tag was expressed in E. coli.
Species	Human
Source	E.coli
ProteinLength	1-593 aa
Storage	Store it under sterile conditions at -20 to -80 centigrade. It is recommended that the protein be aliquoted for optimal storage. Avoid repeated freeze-thaw cycles.
Storage Buffer	Sterile PBS, pH7.4
AA Sequence	<p>MNWSHPQFEKSSGSSGGHHHHHHGGSGGSGSDSEVNQEAKPEVKPEVKPETHIN LKVSDGSSEIFFKIKKTTPLRRLMEAFKRQ GKEMDSLRF LYDGIRIQADQAPEDLDM EDNDIIEAHREQIGGDDDDKAAASSSDSDACGAESNEANSKWLD AHYDPMANIHTF SACLALADLHGDGEYKLVVGD LGPGGQQPRLKVLKGPLVMTESPLPALPAAAATFL MEQHEPRTPALALASGPCVYVYKNLRPYFKFSLPQLPPNPLEQDLWNQAKEDRIDP LTLKEMLESIRETAE EPLSIQSLRFLQLELSEMEAFVNQHKSNSIKRQTVITMTTLKK NLADED AVSCLVLGTENKELLVLDPEAFTILAKMSLPSVPVFLEVSGQFDVEFRLAAA CRNGNIYILRRDSKHPKYCIELSAQPVGLIRVHKVLVVGSTQDSLHGFT HKGKKLWT VQMPAAILTMNLEQHSRGLQAVMAGLANGEVRIYRDKALLNVIHTPDAVTS LCFGR YGREDNTLIMTTRGGGLI IKILKRTAVFVEGGSEVGP PPAQAMKLNVP RKTRLYVDQT</p>

Tel: 1-631-559-9269 1-516-512-3133

Email: info@creative-biomart.com Fax: 1-631-938-8127

45-1 Ramsey Road, Shirley, NY 11967, USA

LREREAGTAMHRAFQTDLYLLRLRAARAYLQALESSLSPLSTTAREPLKLHAVVQGL
GPTFKLTLHLQNTSTTRPVLGLLVCFLYNEALYSLPRAFFKVPLLVPGLNYPLETFVE
SLSNKGISDIKVLVLRREGQSAPLLSAHVNMPGSEGLAAA

Purity > 90% by SDS-PAGE

Concentration 0.17 mg/mL by BCA

GENE INFORMATION

Official Symbol [BBS1](#)

Synonyms BBS1; Bardet-Biedl syndrome 1; BBS2L2; BBSome complex member BBS1; BBS2-like protein 2; bardet-Biedl syndrome 1 protein

Gene ID [582](#)

mRNA Refseq [NM_024649](#)

Protein Refseq [NP_078925](#)

MIM [209901](#)

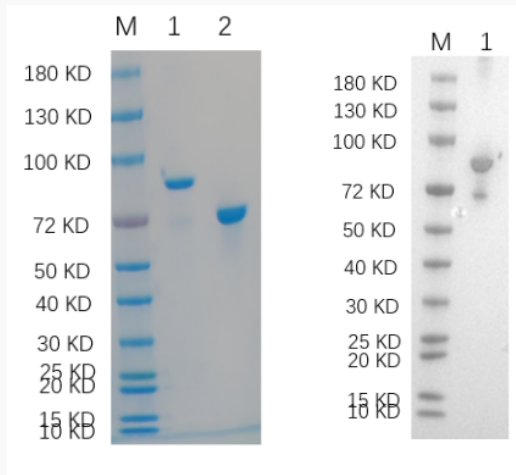
UniProt ID [Q8NFJ9](#)

 Tel: 1-631-559-9269 1-516-512-3133

 Email: info@creative-biomart.com  Fax: 1-631-938-8127

 45-1 Ramsey Road, Shirley, NY 11967, USA

**Reducing 4%-20%
SDS-PAGE (CBB
stained) and WB
(Anti-His Mouse
Monoclonal
antibody) analysis
profiles of purified
BBS1.**



1. BBS1: 1 μ g 2. BSA: 1 μ g

 Tel: 1-631-559-9269 1-516-512-3133

 Email: info@creative-biomart.com  Fax: 1-631-938-8127

 45-1 Ramsey Road, Shirley, NY 11967, USA