

## Recombinant Full Length Human BBS1 Protein, Tag Free

Cat. No. BBS1-02HFL Lot. No. (See product label)

### SPECIFICATION

<b>Product Overview</b>	Recombinant Full Length Human BBS1 Protein (1-593 aa) without tag was expressed in E. coli.
<b>Species</b>	Human
<b>Source</b>	E.coli
<b>ProteinLength</b>	1-593 aa
<b>Description</b>	Mutations in this gene have been observed in patients with the major form (type 1) of Bardet-Biedl syndrome. The encoded protein may play a role in eye, limb, cardiac and reproductive system development.
<b>Source</b>	E. coli
<b>Species</b>	Human
<b>Tag</b>	Non
<b>Molecular Weight</b>	65 kDa
<b>AA Sequence</b>	AAASSSDSDACGAESNEANSKWLDAHYDPMANIHTFSACLALADLHGDGEYKLVVG DLGPGGQQPRLKVLKGPLVMTESPLPALPAAAATFLMEQHEPRTPALALASGPCVY VYKNLRPYFKFSLPQLPPNPLEQDLWNQAKEDRIDPLTLKEMLESIRETAEPLSIQS LRFLQLELSEMEAFVNQHKSNSIKRQTVITMTTLKKNLADEDAVSCLVLGTENKELL

 Tel: 1-631-559-9269 1-516-512-3133

 Email: [info@creative-biomart.com](mailto:info@creative-biomart.com)  Fax: 1-631-938-8127

 45-1 Ramsey Road, Shirley, NY 11967, USA

VLDPEAFTILAKMSLPSVPVFLEVSGQFDVEFRLAAACRNGNIYLRRDSKHPKYCIEL  
 SAQPVGLIRVHKVLVVGSTQDSLHGFTHKGKKLWTVQMPAAILTMNLLEQHSRGLQ  
 AVMAGLANGEVRIYRDKALLNVIHTPDAVTSLCFGRYGREDNTLIMTTRGGGLIILKILK  
 RTAVFVEGGSEVGPQAMKLNVPKTRLYVDQTLREREAGTAMHRAFQTDLYLL  
 RLRAARAYLQALESSLSPLSTTAREPLKLHAVVQGLGPTFKLTLHLQNTSTTRPVLGL  
 LVCFLYNEALYSLPRAFFKVPLLVPGLNYPLETFVESLSNKGISDIIKVLVLRREGQSAP  
 LLSAHVNMPGSEGLAAA

**Purity** > 90% by SDS-PAGE

**Storage** Store it under sterile conditions at -20 to -80 centigrade. It is recommended that the protein be aliquoted for optimal storage. Avoid repeated freeze-thaw cycles.

**Storage Buffer** Sterile PBS, pH7.4

**Concentration** 0.26 mg/mL by BCA

## GENE INFORMATION

**Gene Name** [BBS1 Bardet-Biedl syndrome 1 \[ Homo sapiens \(human\) \]](#)

**Official Symbol** [BBS1](#)

**Synonyms** BBS1; Bardet-Biedl syndrome 1; Bardet-Biedl syndrome 1 protein; FLJ23590; BBS2-like protein 2; BBS2L2; MGC51114; MGC126183; MGC126184

**Gene ID** [582](#)

**mRNA Refseq** [NM\\_024649](#)

**Protein Refseq** [NP\\_078925](#)

 Tel: 1-631-559-9269 1-516-512-3133

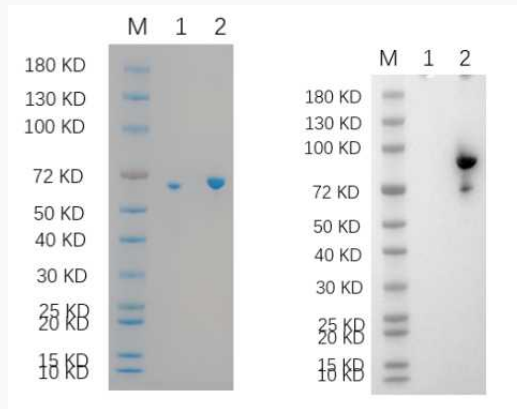
 Email: [info@creative-biomart.com](mailto:info@creative-biomart.com)  Fax: 1-631-938-8127

 45-1 Ramsey Road, Shirley, NY 11967, USA

**MIM** 209901

**UniProt ID** Q8NFJ9

**Reducing 4%-20%  
SDS-PAGE (CBB  
stained) and WB  
(Anti-His Mouse  
Monoclonal  
antibody) analysis  
profiles of purified  
BBS1.**



1. BBS1: 1  $\mu$ g

2. BSA: 1  $\mu$ g

 Tel: 1-631-559-9269 1-516-512-3133

 Email: [info@creative-biomart.com](mailto:info@creative-biomart.com)  Fax: 1-631-938-8127

 45-1 Ramsey Road, Shirley, NY 11967, USA