

Recombinant Human BBS1 Protein

Cat. No. BBS1-105H Lot. No. (See product label)

SPECIFICATION

Product Overview	Human BBS1 partial ORF (NP_078925, 187 a.a. - 295 a.a.) recombinant protein with GST-tag at N-terminal.
Species	Human
Source	Wheat Germ
ProteinLength	187-295 a.a.
Description	Mutations in this gene have been observed in patients with the major form (type 1) of Bardet-Biedl syndrome. The encoded protein may play a role in eye, limb, cardiac and reproductive system development.
Form	50 mM Tris-HCl, 10 mM reduced Glutathione, pH=8.0 in the elution buffer.
Molecular Mass	37.73 kDa
AA Sequence	NQHKSNSIKRQTVITMTTLKKNLADEDAVSCLVLGTENKELLVLDPEAFTILAKMSLP SVPVFLEVSGQFDVEFRLAAACRNGNIYILRRDSKHPKYCIELSAQPVGL
Purity	Glutathione Sepharose 4 Fast Flow
Notes	Best use within three months from the date of receipt of this protein.
Storage	Store at -80 centigrade. Aliquot to avoid repeated freezing and thawing.

 Tel: 1-631-559-9269 1-516-512-3133

 Email: info@creative-biomart.com  Fax: 1-631-938-8127

 45-1 Ramsey Road, Shirley, NY 11967, USA

Storage Buffer 50 mM Tris-HCl, 10 mM reduced Glutathione, pH=8.0 in the elution buffer.

GENE INFORMATION

Gene Name BBS1 Bardet-Biedl syndrome 1 [Homo sapiens]

Official Symbol BBS1

Synonyms BBS1; Bardet-Biedl syndrome 1; Bardet-Biedl syndrome 1 protein; FLJ23590; BBS2-like protein 2; BBS2L2; MGC511114; MGC126183; MGC126184;

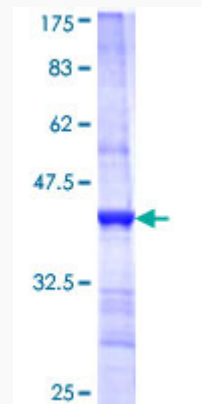
Gene ID 582

mRNA Refseq NM_024649

Protein Refseq NP_078925

MIM 209901

UniProt ID Q8NFJ9



 Tel: 1-631-559-9269 1-516-512-3133

 Email: info@creative-biomart.com  Fax: 1-631-938-8127

 45-1 Ramsey Road, Shirley, NY 11967, USA