

Recombinant Human BBS2 Protein, GST-tagged

Cat. No. BBS2-107H Lot. No. (See product label)

SPECIFICATION

Product Overview	Human BBS2 full-length ORF (AAH14140.1, 1 a.a. - 721 a.a.) recombinant protein with GST-tag at N-terminal.
Species	Human
Source	Wheat Germ
Description	<p>This gene is a member of the Bardet-Biedl syndrome (BBS) gene family. Bardet-Biedl syndrome is an autosomal recessive disorder characterized by severe pigmentary retinopathy, obesity, polydactyly, renal malformation and mental retardation. The proteins encoded by BBS gene family members are structurally diverse and the similar phenotypes exhibited by mutations in BBS gene family members is likely due to their shared roles in cilia formation and function. Many BBS proteins localize to the basal bodies, ciliary axonemes, and pericentriolar regions of cells. BBS proteins may also be involved in intracellular trafficking via microtubule-related transport. The protein encoded by this gene forms a multiprotein BBSome complex with six other BBS proteins.</p>
Form	50 mM Tris-HCl, 10 mM reduced Glutathione, pH=8.0 in the elution buffer.
Molecular Mass	106.3 kDa
AA Sequence	<p>MLLPVFTLKL RHKISPRMVAIGRYDGTHPCLAAATQTGKVFHNP HTRNQHV SASRV FQSPLESDV SLLNINQAVSCLTAGVLNPELGYDALLVGTQTNLLAYDVYNN SDFYR EVADGANVVVLGTLGDISSPLAII GGNCALQGFNHEGSDLFWVTVDN VNSLALCDF</p>

 Tel: 1-631-559-9269 1-516-512-3133

 Email: info@creative-biomart.com  Fax: 1-631-938-8127

 45-1 Ramsey Road, Shirley, NY 11967, USA

DGDGKKELLVGSEDFDIRVFKEDEIVAEMTETEIVTSLCPMYGSRFGYALSNGTVGV
 YDKTSRYWRIKSKNHAMSIHAFDLNSDGVNELITGWSNGKVDARSVRTGEVIFKDNF
 SSAIAGVVEGDYRMDGHIQLICCSVDGEIRGYLPGTAEMRGNLMDTSAEQDLIRELS
 QKKQNLLLELRNYEENAKAELASPLNEADGHRGIIPANTRLHTTSLVSLGNETQTAHT
 ELRISTSNDTIIRAVLIFAEGIFTGESHVVHPSIHNLSSSICIPVPPKDVVDLHLKAFVG
 YRSSTQFHFVFESTRQLPRFSMYALTSLDPASEPISYVNFTIAERAQRVWVWLGQNF
 LPEDTHIQNAPFQVCFTSLRNGGHLHIKIKLSGEITINTDDIDLAGDIIQSMASFFAIEDL
 QVEADFPVYFEELRKVLVKVDEYHSHVHQLSADMADHSNLIRSLLVGAEDARLMRD
 MKTMKSRMELYDLNRDLLNGYKIRCNNHTELLGNLKAQNQAIQRAGRRLRVGKPKN
 QVITACRDAIRSNNINTLFLKIMRVGTASS

Notes	Best use within three months from the date of receipt of this protein.
Storage	Store at -80 centigrade. Aliquot to avoid repeated freezing and thawing.
Storage Buffer	50 mM Tris-HCl, 10 mM reduced Glutathione, pH=8.0 in the elution buffer.

GENE INFORMATION

Gene Name	BBS2 Bardet-Biedl syndrome 2 [Homo sapiens]
Official Symbol	BBS2
Synonyms	BBS2; Bardet-Biedl syndrome 2; BBS; Bardet-Biedl syndrome 2 protein; MGC20703;
Gene ID	583
mRNA Refseq	NM_031885
Protein Refseq	NP_114091

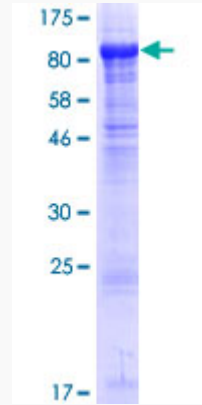
 Tel: 1-631-559-9269 1-516-512-3133

 Email: info@creative-biomart.com  Fax: 1-631-938-8127

 45-1 Ramsey Road, Shirley, NY 11967, USA

MIM 606151

UniProt ID Q9BXC9



 Tel: 1-631-559-9269 1-516-512-3133

 Email: info@creative-biomart.com  Fax: 1-631-938-8127

 45-1 Ramsey Road, Shirley, NY 11967, USA