

Recombinant Human BBS4 Protein, Myc/DDK-tagged, C13 and N15-labeled

Cat. No. BBS4-3959H **Lot. No.** (See product label)

SPECIFICATION

Product Overview	BBS4 MS Standard C13 and N15-labeled recombinant protein (NP_149017) with a C-terminal MYC/DDK tag, was expressed in HEK293 cells.
Species	Human
Source	HEK293
Description	<p>This gene is a member of the Bardet-Biedl syndrome (BBS) gene family. Bardet-Biedl syndrome is an autosomal recessive disorder characterized by severe pigmentary retinopathy, obesity, polydactyly, renal malformation and cognitive disability. The proteins encoded by BBS gene family members are structurally diverse. The similar phenotypes exhibited by mutations in BBS gene family members are likely due to the protein's shared roles in cilia formation and function. Many BBS proteins localize to the basal bodies, ciliary axonemes, and pericentriolar regions of cells. BBS proteins may also be involved in intracellular trafficking via microtubule-related transport. The protein encoded by this gene has sequence similarity to O-linked N-acetylglucosamine (O-GlcNAc) transferases in plants and archaebacteria and in human forms a multi-protein "BBSome" complex with seven other BBS proteins. Alternate splicing results in multiple transcript variants.</p>
Molecular Mass	58.3 kDa
AA Sequence	MAEERVATRTQFPVSTESQKPRQKKAPEFFPILEKQNWLIHLHYIRKDYEACKAVIKEQ

 Tel: 1-631-559-9269 1-516-512-3133

 Email: info@creative-biomart.com  Fax: 1-631-938-8127

 45-1 Ramsey Road, Shirley, NY 11967, USA

LQETQGLCEYAIYVQALIFRLEGNIQESLELFQTCAVLSPQSADNLKQVARSLFLLGK
 HKAAIEVYNEAAKLNQKDWEISHNLGVCYIYLKQFNKAQDQLHNALNLRHDLTYIML
 GKIHLLEGDLDKAIEVYKKAVEFSPENTELLTTLGLLYLQLGIYQKAFEHLGNALTYDP
 TNYKAILAAGSMMQTHGDFDVALTKYRVVACAVPESPPLWNNIGMCFFGKKKYVAAI
 SCLKRANYLAPFDWKILYNLGLVHMTMQQYASAFHFLSAAINFQPKMGELYMLLAVA
 LTNLEDTENAKRAYAEAVHLDKCNPLVNLNYAVLLYNQGEKKNALVQYQEMEKKVS
 LLKDSSLEFDSEMVEMAQKLGAALQVGEALVWTKPKVDPKSKHQTSTSTSKPASFQ
 QPLGSNQUALGQAMSSAAAYRTLPSGAGGTSQFTKPPSLPEPEPAVESSPTETSEQ
 IREKTRTRPLEQKLISEEDLAANDILDYKDDDDKV

Purity > 80% as determined by SDS-PAGE and Coomassie blue staining

Stability Stable for 3 months from receipt of products under proper storage and handling conditions.

Storage Store at -80 centigrade. Avoid repeated freeze-thaw cycles.

Concentration 50 µg/mL as determined by BCA

Storage Buffer 100 mM glycine, 25 mM Tris-HCl, pH 7.3.

GENE INFORMATION

Gene Name [BBS4 Bardet-Biedl syndrome 4 \[Homo sapiens \(human\) \]](#)

Official Symbol [BBS4](#)

Synonyms BBS4; Bardet-Biedl syndrome 4; Bardet-Biedl syndrome 4 protein;

Gene ID [585](#)

 Tel: 1-631-559-9269 1-516-512-3133

 Email: info@creative-biomart.com  Fax: 1-631-938-8127

 45-1 Ramsey Road, Shirley, NY 11967, USA

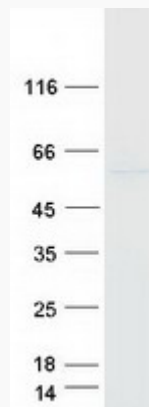
mRNA Refseq [NM_033028](#)

Protein Refseq [NP_149017](#)

MIM [600374](#)

UniProt ID [Q96RK4](#)

SDS-PAGE



 Tel: 1-631-559-9269 1-516-512-3133

 Email: info@creative-biomart.com  Fax: 1-631-938-8127

 45-1 Ramsey Road, Shirley, NY 11967, USA