

Recombinant Human BBS5 Protein, GST-tagged

Cat. No. BBS5-109H Lot. No. (See product label)

SPECIFICATION

Product Overview	Human BBS5 full-length ORF (NP_689597.1, 1 a.a. - 341 a.a.) recombinant protein with GST-tag at N-terminal.
Species	Human
Source	Wheat Germ
Description	This gene encodes a protein that has been directly linked to Bardet-Biedl syndrome. The primary features of this syndrome include retinal dystrophy, obesity, polydactyly, renal abnormalities and learning disabilities. Experimentation in non-human eukaryotes suggests that this gene is expressed in ciliated cells and that it is required for the formation of cilia. Alternate transcriptional splice variants have been observed but have not been fully characterized.
Form	50 mM Tris-HCl, 10 mM reduced Glutathione, pH=8.0 in the elution buffer.
Molecular Mass	65.2 kDa
AA Sequence	MSVLDALWEDRDVRFDLQAQQMKTRPGEVLIDCLDSIEDTKGNNGDRGRLLVTNLRILWHSALSRVNVSVGYNCILNITTRTANSKLRGQTEALYILTKCNSTRFEFIFTNLVPGSPRLFTSVMVHRAYETSKMYRDFKLRSAIQNKQLRLLPQEHVYDKINGVWNLSSDQGNLGTFFITNVRIVWHANMNSDFNVSIPYLQIRSIKIRDSKFGALVIESSQQSGGYV LGFKIDPVEKLQESVKEINSLHKVYSASPIFGVDYEMEEKPQPLEALTVEQIQDDVEIDSDGHTDAFVAYFADGNKQQDREPVFSEELGLAIEKLDGFTLQGLWEVMS

 Tel: 1-631-559-9269 1-516-512-3133

 Email: info@creative-biomart.com  Fax: 1-631-938-8127

 45-1 Ramsey Road, Shirley, NY 11967, USA

Notes	Best use within three months from the date of receipt of this protein.
Storage	Store at -80 centigrade. Aliquot to avoid repeated freezing and thawing.
Storage Buffer	50 mM Tris-HCl, 10 mM reduced Glutathione, pH=8.0 in the elution buffer.

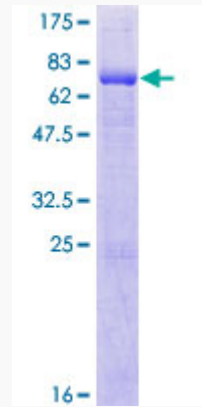
GENE INFORMATION

Gene Name	BBS5 Bardet-Biedl syndrome 5 [Homo sapiens]
Official Symbol	BBS5
Synonyms	BBS5; Bardet-Biedl syndrome 5; Bardet-Biedl syndrome 5 protein; DKFZp762I194;
Gene ID	129880
mRNA Refseq	NM_152384
Protein Refseq	NP_689597
MIM	603650
UniProt ID	Q8N3I7

 Tel: 1-631-559-9269 1-516-512-3133

 Email: info@creative-biomart.com  Fax: 1-631-938-8127

 45-1 Ramsey Road, Shirley, NY 11967, USA



 Tel: 1-631-559-9269 1-516-512-3133

 Email: info@creative-biomart.com  Fax: 1-631-938-8127

 45-1 Ramsey Road, Shirley, NY 11967, USA