

## Recombinant Human BBS7 Protein, GST-tagged

Cat. No. BBS7-110H Lot. No. (See product label)

### SPECIFICATION

<b>Product Overview</b>	Human BBS7 full-length ORF ( NP_789794.1, 1 a.a. - 715 a.a.) recombinant protein with GST-tag at N-terminal.
<b>Species</b>	Human
<b>Source</b>	Wheat Germ
<b>Description</b>	Mutations in this gene have been observed in patients with Bardet-Biedl syndrome type 7. The encoded protein may play a role in eye, limb, cardiac and reproductive system development. Two transcript variants encoding distinct isoforms have been identified for this gene.
<b>Form</b>	50 mM Tris-HCl, 10 mM reduced Glutathione, pH=8.0 in the elution buffer.
<b>Molecular Mass</b>	106.8 kDa
<b>AA Sequence</b>	MDLILNRMDYLQVGVTSQKTMKLIPASRHRATQKVVIGDHDGVVMCFGMKKGEAAA VFKTLPGPKIARLELGGVINTPQEKIFIAAASEIRGFTKRGKQFLSFETNLTESIKAMHI SGSDLFLSASYIYNHYCDCKDQHYYLSGDKINDVICLPVERLSRITPVLACQDRVLRV LQGSVVMYAVEVPGPPTVLALHNGNGGDSGEDLLFGTSDGKLALIQITTSKPVRKW EIQNEKKRGGILCIDSFDIVGDGVKDLLVGRDDGMVEVYSFDNANEPVLRFDQMLSE SVTSIQGGCVGKDSYDEIVVSTYSGWVTGLTTEPIHKESGPGEELKINQEMQNKISSL RNELEHLQYKVLQERENYQQSSQSSKAKSAVPSFGINDKFTLNKDDASYSLILEVQT AIDNVLIQSDVPIDLLDVKNSAVVSFSSCDSESNDNFLATYRCQADTTRLELKIRSI EGQYGTLLQAYVTPRIQPKTCQVRQYHIKPLSLHQRTHFIDHDRPMNTLTLTGQFSFA

 Tel: 1-631-559-9269 1-516-512-3133

 Email: [info@creative-biomart.com](mailto:info@creative-biomart.com)  Fax: 1-631-938-8127

 45-1 Ramsey Road, Shirley, NY 11967, USA

EVHSWVVFCLPEVPEKPPAGECVTFYFQNTFLDTQLESTYRKGEVFKSDNISTISIL  
 KDVLSKEATKRKINLNISYEINEVSVKHTLKLHPKLEYQLLLAKKVQLIDALKELQIHEG  
 NTNFLIPEYHCILEEADHLQEEYKKQPAHLERLYGMITDLFIDKFKFKGTNVKTKVPLL  
 LEILDSYDQNALISFFDAA

<b>Notes</b>	Best use within three months from the date of receipt of this protein.
<b>Storage</b>	Store at -80 centigrade. Aliquot to avoid repeated freezing and thawing.
<b>Storage Buffer</b>	50 mM Tris-HCl, 10 mM reduced Glutathione, pH=8.0 in the elution buffer.

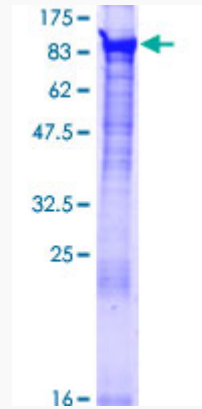
## GENE INFORMATION

<b>Gene Name</b>	BBS7 Bardet-Biedl syndrome 7 [ Homo sapiens ]
<b>Official Symbol</b>	BBS7
<b>Synonyms</b>	BBS7; Bardet-Biedl syndrome 7; Bardet-Biedl syndrome 7 protein; BBS2L1; FLJ10715; BBS2-like 1; BBS2-like protein 1;
<b>Gene ID</b>	55212
<b>mRNA Refseq</b>	NM_018190
<b>Protein Refseq</b>	NP_060660
<b>MIM</b>	607590
<b>UniProt ID</b>	Q8IWZ6

 Tel: 1-631-559-9269 1-516-512-3133

 Email: [info@creative-biomart.com](mailto:info@creative-biomart.com)  Fax: 1-631-938-8127

 45-1 Ramsey Road, Shirley, NY 11967, USA



 Tel: 1-631-559-9269 1-516-512-3133

 Email: [info@creative-biomart.com](mailto:info@creative-biomart.com)  Fax: 1-631-938-8127

 45-1 Ramsey Road, Shirley, NY 11967, USA