

## Recombinant Human BBS7 Protein, GST-tagged

Cat. No. BBS7-111H Lot. No. (See product label)

### SPECIFICATION

<b>Product Overview</b>	Human BBS7 partial ORF ( NP_060660, 574 a.a. - 672 a.a.) recombinant protein with GST-tag at N-terminal.
<b>Species</b>	Human
<b>Source</b>	Wheat Germ
<b>Description</b>	Mutations in this gene have been observed in patients with Bardet-Biedl syndrome type 7. The encoded protein may play a role in eye, limb, cardiac and reproductive system development. Two transcript variants encoding distinct isoforms have been identified for this gene.
<b>Form</b>	50 mM Tris-HCl, 10 mM reduced Glutathione, pH=8.0 in the elution buffer.
<b>Molecular Mass</b>	36.63 kDa
<b>AA Sequence</b>	SILKDVLSKEATKRKINLNISYEINEVSVKHTLKLHPKLEYQLLLAKKVQLIDALKEIQI HEGNTNFLIPEYHCILEEADHLQEEYKKQPAHLERLYG
<b>Purity</b>	Glutathione Sepharose 4 Fast Flow
<b>Notes</b>	Best use within three months from the date of receipt of this protein.
<b>Storage</b>	Store at -80 centigrade. Aliquot to avoid repeated freezing and thawing.

 Tel: 1-631-559-9269 1-516-512-3133

 Email: [info@creative-biomart.com](mailto:info@creative-biomart.com)  Fax: 1-631-938-8127

 45-1 Ramsey Road, Shirley, NY 11967, USA

**Storage Buffer** 50 mM Tris-HCl, 10 mM reduced Glutathione, pH=8.0 in the elution buffer.

## GENE INFORMATION

**Gene Name** BBS7 Bardet-Biedl syndrome 7 [ Homo sapiens ]

**Official Symbol** BBS7

**Synonyms** BBS7; Bardet-Biedl syndrome 7; Bardet-Biedl syndrome 7 protein; BBS2L1; FLJ10715; BBS2-like 1; BBS2-like protein 1;

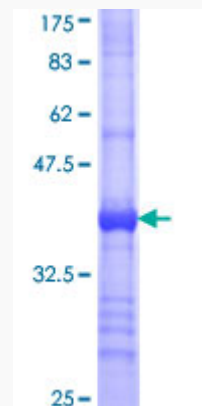
**Gene ID** 55212

**mRNA Refseq** NM\_018190

**Protein Refseq** NP\_060660

**MIM** 607590

**UniProt ID** Q8IWZ6



 Tel: 1-631-559-9269 1-516-512-3133

 Email: [info@creative-biomart.com](mailto:info@creative-biomart.com)  Fax: 1-631-938-8127

 45-1 Ramsey Road, Shirley, NY 11967, USA