

## Recombinant Human BCAM Protein (Glu32-His257), N-His tagged

Cat. No. BCAM-0734H Lot. No. (See product label)

### SPECIFICATION

<b>Product Overview</b>	Recombinant Human CD239/BCAM (Glu32-His257) fused with the N-His tag was expressed in E. coli.
<b>Species</b>	Human
<b>Source</b>	E.coli
<b>ProteinLength</b>	Glu32-His257
<b>Form</b>	Lyophilized powder/frozen liquid
<b>Molecular Mass</b>	27.30 kDa
<b>Purity</b>	>90% as determined by SDS-PAGE.
<b>Notes</b>	For research use only.
<b>Storage</b>	Use a manual defrost freezer and avoid repeated freeze thaw cycles. Store at 2 to 8 centigrade for one week. Store at -20 to -80 centigrade for twelve months from the date of receipt.
<b>Storage Buffer</b>	0.01M PBS, pH 7.4, 0.02% NLS
<b>Reconstitution</b>	Reconstitute in sterile water for a stock solution.

 Tel: 1-631-559-9269 1-516-512-3133

 Email: [info@creative-biomart.com](mailto:info@creative-biomart.com)  Fax: 1-631-938-8127

 45-1 Ramsey Road, Shirley, NY 11967, USA

**Shipping** They are shipped out with dry ice/blue ice unless customers require otherwise.

## GENE INFORMATION

**Gene Name** [BCAM basal cell adhesion molecule \(Lutheran blood group\) \[ Homo sapiens \(human\) \]](#)

**Official Symbol** [BCAM](#)

**Synonyms** BCAM; basal cell adhesion molecule (Lutheran blood group); basal cell adhesion molecule (Lu and Au blood groups), LU, Lutheran blood group (Auberger b antigen included); basal cell adhesion molecule; CD239; F8/G253 antigen; lutheran antigen; Auberger b antigen; glycoprotein 95kDa; B-cell adhesion molecule; B-CAM cell surface glycoprotein; lutheran blood group glycoprotein; antigen identified by monoclonal F8; basal cell adhesion molecule (Lu and Au blood groups); AU; LU; MSK19;

**Gene ID** [4059](#)

**mRNA Refseq** [NM\\_001013257](#)

**Protein Refseq** [NP\\_001013275](#)

**MIM** [612773](#)

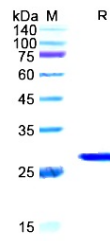
**UniProt ID** [P50895](#)

 Tel: 1-631-559-9269 1-516-512-3133

 Email: [info@creative-biomart.com](mailto:info@creative-biomart.com)  Fax: 1-631-938-8127

 45-1 Ramsey Road, Shirley, NY 11967, USA

**SDS-PAGE**



 Tel: 1-631-559-9269 1-516-512-3133

 Email: [info@creative-biomart.com](mailto:info@creative-biomart.com)  Fax: 1-631-938-8127

 45-1 Ramsey Road, Shirley, NY 11967, USA