

Recombinant Human BCAM protein, rFc-tagged

Cat. No. BCAM-3682H Lot. No. (See product label)

SPECIFICATION

Product Overview	Recombinant Human BCAM protein(P50895)(Glu32-Ala547), fused with C-terminal rFc tag, was expressed in HEK293.
Species	Human
Source	HEK293
Form	Lyophilized from 0.22 µm filtered solution in PBS, pH 7.4. Normally 5% trehalose and 5% mannitol are added as protectants before lyophilization.
Molecular Mass	82.5 kDa
Endotoxin	<0.1 EU/µg protein, LAL method
Purity	>90 %, SDS-PAGE >90 %, SEC-HPLC
Storage	It is recommended that the protein be aliquoted for optimal storage. Avoid repeated freeze-thaw cycles. Until expiry date, -20°C to -80°C as lyophilized proteins. 3 months, -20°C to -80°C under sterile conditions after reconstitution.
Reconstitution	Briefly centrifuge the tube before opening. Reconstitute at 0.1-0.5 mg/mL in sterile water.

GENE INFORMATION

 Tel: 1-631-559-9269 1-516-512-3133

 Email: info@creative-biomart.com  Fax: 1-631-938-8127

 45-1 Ramsey Road, Shirley, NY 11967, USA

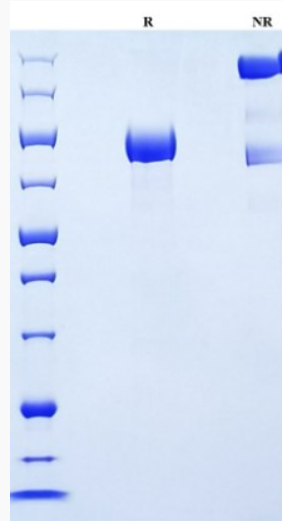
Gene Name	BCAM basal cell adhesion molecule (Lutheran blood group) [Homo sapiens]
Official Symbol	BCAM
Synonyms	BCAM; basal cell adhesion molecule (Lutheran blood group); basal cell adhesion molecule (Lu and Au blood groups) , LU, Lutheran blood group (Auberger b antigen included); basal cell adhesion molecule; CD239; F8/G253 antigen; lutheran antigen; Auberger b antigen; glycoprotein 95kDa; B-cell adhesion molecule; B-CAM cell surface glycoprotein; lutheran blood group glycoprotein; antigen identified by monoclonal F8; basal cell adhesion molecule (Lu and Au blood groups); AU; LU; MSK19;
Gene ID	4059
mRNA Refseq	NM_001013257
Protein Refseq	NP_001013275
MIM	612773
UniProt ID	P50895

 Tel: 1-631-559-9269 1-516-512-3133

 Email: info@creative-biomart.com  Fax: 1-631-938-8127

 45-1 Ramsey Road, Shirley, NY 11967, USA

SDS-PAGE



 Tel: 1-631-559-9269 1-516-512-3133

 Email: info@creative-biomart.com  Fax: 1-631-938-8127

 45-1 Ramsey Road, Shirley, NY 11967, USA