

Recombinant Human BCAM Protein (Met1-Ala547), C-His tagged

Cat. No. BCAM-4469H Lot. No. (See product label)

SPECIFICATION

Product Overview	Recombinant human BCAM (Met1-Ala547) fused with the C-terminal His tag was expressed in Mammalian cells.
Species	Human
Source	Mammalian Cells
ProteinLength	Met1-Ala547
Form	Lyophilized powder/frozen liquid
Molecular Mass	60.17 kDa
Endotoxin	< 1.0 EU/μg of the protein as determined by the LAL method.
Purity	>90% as determined by SDS-PAGE.
Notes	For research use only.
Storage	Use a manual defrost freezer and avoid repeated freeze thaw cycles. Store at 2 to 8 centigrade for one week. Store at -20 to -80 centigrade for twelve months from the date of receipt.
Storage Buffer	Supplied as solution form in PBS or lyophilized from PBS.

 Tel: 1-631-559-9269 1-516-512-3133

 Email: info@creative-biomart.com  Fax: 1-631-938-8127

 45-1 Ramsey Road, Shirley, NY 11967, USA

Reconstitution Reconstitute in sterile water for a stock solution.

Shipping They are shipped out with dry ice/blue ice unless customers require otherwise.

GENE INFORMATION

Gene Name [BCAM basal cell adhesion molecule \(Lutheran blood group\) \[Homo sapiens \(human\) \]](#)

Official Symbol [BCAM](#)

Synonyms BCAM; basal cell adhesion molecule (Lutheran blood group); basal cell adhesion molecule (Lu and Au blood groups), LU, Lutheran blood group (Auberger b antigen included); basal cell adhesion molecule; CD239; F8/G253 antigen; lutheran antigen; Auberger b antigen; glycoprotein 95kDa; B-cell adhesion molecule; B-CAM cell surface glycoprotein; lutheran blood group glycoprotein; antigen identified by monoclonal F8; basal cell adhesion molecule (Lu and Au blood groups); AU; LU; MSK19;

Gene ID [4059](#)

mRNA Refseq [NM_001013257](#)

Protein Refseq [NP_001013275](#)

MIM [612773](#)

UniProt ID [P50895](#)

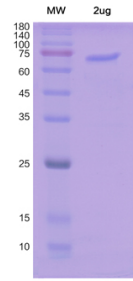
 Tel: 1-631-559-9269 1-516-512-3133

 Email: info@creative-biomart.com  Fax: 1-631-938-8127

 45-1 Ramsey Road, Shirley, NY 11967, USA



SDS-PAGE



SDS-PAGE Image

Tel: 1-631-559-9269 1-516-512-3133

Email: info@creative-biomart.com Fax: 1-631-938-8127

45-1 Ramsey Road, Shirley, NY 11967, USA