

Recombinant Human BCAM protein, hFc-tagged

Cat. No. BCAM-595H Lot. No. (See product label)

SPECIFICATION

Product Overview	Recombinant Human BCAM protein(NP_005572.2) (Met 1-Ala 547) was expressed in HEK293, fused with the Fc region of human IgG1 at the C-terminus.
Species	Human
Source	HEK293
ProteinLength	1-547 aa
Form	Lyophilized from sterile PBS, pH 7.4.
Molecular Mass	The recombinant human BCAM/Fc is a disulfide-linked homodimeric protein. The reduced monomer consists of 754 amino acids and predicts a molecular mass of 83 kDa. As a result of glycosylation, the rh BCAM/Fc monomer migrates as approximately 100-110 kDa band in SDS-PAGE under reducing conditions.
Endotoxin	< 1 EU/g as determined by LAL test.
Purity	> 95 % as determined by SDS-PAGE
Storage	Store it under sterile conditions at -20°C to -80°C upon receiving. Recommend to aliquot the protein into smaller quantities for optimal storage. Avoid repeated freeze-thaw cycles.
Reconstitution	It is recommended that sterile water be added to the vial to prepare a stock solution of

 Tel: 1-631-559-9269 1-516-512-3133

 Email: info@creative-biomart.com  Fax: 1-631-938-8127

 45-1 Ramsey Road, Shirley, NY 11967, USA

0.2 ug/ul. Centrifuge the vial at 4°C before opening to recover the entire contents.

GENE INFORMATION

Gene Name [BCAM basal cell adhesion molecule \(Lutheran blood group\) \[Homo sapiens \]](#)

Official Symbol [BCAM](#)

Synonyms BCAM; basal cell adhesion molecule (Lutheran blood group); basal cell adhesion molecule (Lu and Au blood groups) , LU, Lutheran blood group (Auberger b antigen included); basal cell adhesion molecule; CD239; F8/G253 antigen; lutheran antigen; Auberger b antigen; glycoprotein 95kDa; B-cell adhesion molecule; B-CAM cell surface glycoprotein; lutheran blood group glycoprotein; antigen identified by monoclonal F8; basal cell adhesion molecule (Lu and Au blood groups); AU; LU; MSK19;

Gene ID [4059](#)

mRNA Refseq [NM_001013257](#)

Protein Refseq [NP_001013275](#)

MIM [612773](#)

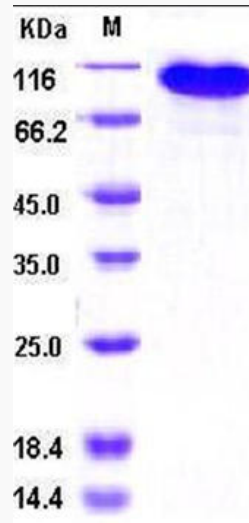
UniProt ID [P50895](#)

 Tel: 1-631-559-9269 1-516-512-3133

 Email: info@creative-biomart.com  Fax: 1-631-938-8127

 45-1 Ramsey Road, Shirley, NY 11967, USA

SDS-PAGE



 Tel: 1-631-559-9269 1-516-512-3133

 Email: info@creative-biomart.com  Fax: 1-631-938-8127

 45-1 Ramsey Road, Shirley, NY 11967, USA