

# Recombinant Full Length Human BCAP31 Protein, C-Flag-tagged

**Cat. No.** BCAP31-1947HFL    **Lot. No.** (See product label)

## SPECIFICATION

<b>Product Overview</b>	Recombinant Full Length Human BCAP31 Protein, fused to Flag-tag at C-terminus, was expressed in Mammalian cells.
<b>Species</b>	Human
<b>Source</b>	Mammalian Cells
<b>Description</b>	This gene encodes a member of the B-cell receptor associated protein 31 superfamily. The encoded protein is a multi-pass transmembrane protein of the endoplasmic reticulum that is involved in the anterograde transport of membrane proteins from the endoplasmic reticulum to the Golgi and in caspase 8-mediated apoptosis. Microdeletions in this gene are associated with contiguous ABCD1/DXS1375E deletion syndrome (CADD5), a neonatal disorder. Alternative splicing of this gene results in multiple transcript variants. Two related pseudogenes have been identified on chromosome 16.
<b>Form</b>	25 mM Tris HCl, pH 7.3, 100 mM glycine, 10% glycerol.
<b>Molecular Mass</b>	27.8 kDa
<b>AA Sequence</b>	MSLQWTAVATFLYAIEVFVLLLCIPFISPKRWQKIFKSRLVELLVSYGNTFFVVLIVLV LLVIDAVREI REYDDVTEKVNLRNNPGAMEHFHMKLFRAQRNLYIAGFSLLSFLLRR LVTLSQQATLLASNEAFKKQA ESASEAAKKYMEENDQLKKGAAVDGGKLDVGNAE VKLEENRSLKADLQKLDKDELASTKQKLEKAENQVL AMRKQSEGLTKEYDRLLLEEH

 Tel: 1-631-559-9269    1-516-512-3133

 Email: [info@creative-biomart.com](mailto:info@creative-biomart.com)     Fax: 1-631-938-8127

 45-1 Ramsey Road, Shirley, NY 11967, USA

AKLQAAVDGPMDKKEE TRTRPLEQKLISEEDLAANDILDYKDDDDKV

**Purity** > 80% as determined by SDS-PAGE and Coomassie blue staining.

**Stability** Stable for 12 months from the date of receipt of the product under proper storage and handling conditions. Avoid repeated freeze-thaw cycles.

**Storage** Store at -80 centigrade.

**Concentration** >50 ug/mL as determined by microplate BCA method.

**Preparation** Recombinant protein was captured through anti-DDK affinity column followed by conventional chromatography steps.

**Protein Families** Druggable Genome, Transmembrane

**Full Length** Full L.

## GENE INFORMATION

**Gene Name** [BCAP31 B cell receptor associated protein 31 \[ Homo sapiens \(human\) \]](#)

**Official Symbol** [BCAP31](#)

**Synonyms** CDM; DDCH; BAP31; 6C6-AG; DXS1357E

**Gene ID** [10134](#)

**mRNA Refseq** [NM\\_001139441.1](#)

**Protein Refseq** [NP\\_001132913.1](#)

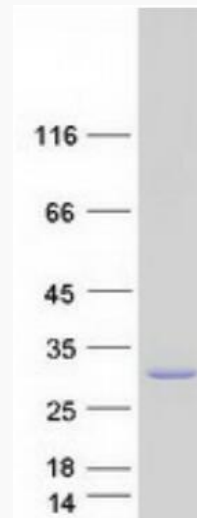
 Tel: 1-631-559-9269 1-516-512-3133

 Email: [info@creative-biomart.com](mailto:info@creative-biomart.com)  Fax: 1-631-938-8127

 45-1 Ramsey Road, Shirley, NY 11967, USA

**MIM** 300398

**UniProt ID** P51572



Coomassie blue staining of purified BCAP31 protein.

 Tel: 1-631-559-9269 1-516-512-3133

 Email: [info@creative-biomart.com](mailto:info@creative-biomart.com)  Fax: 1-631-938-8127

 45-1 Ramsey Road, Shirley, NY 11967, USA