

# Recombinant Human BCAP31 Protein, Myc/DDK-tagged, C13 and N15-labeled

**Cat. No.** BCAP31-5103H    **Lot. No.** (See product label)

## SPECIFICATION

<b>Product Overview</b>	BCAP31 MS Standard C13 and N15-labeled recombinant protein (NP_001132929) with a C-terminal MYC/DDK tag, was expressed in HEK293 cells.
<b>Species</b>	Human
<b>Source</b>	HEK293
<b>Description</b>	This gene encodes a member of the B-cell receptor associated protein 31 superfamily. The encoded protein is a multi-pass transmembrane protein of the endoplasmic reticulum that is involved in the anterograde transport of membrane proteins from the endoplasmic reticulum to the Golgi and in caspase 8-mediated apoptosis. Microdeletions in this gene are associated with contiguous ABCD1/DXS1375E deletion syndrome (CADD5), a neonatal disorder. Alternative splicing of this gene results in multiple transcript variants. Two related pseudogenes have been identified on chromosome 16.
<b>Molecular Mass</b>	34.6 kDa
<b>AA Sequence</b>	MGAEASSSWCPGTALPEERLSVKRASEISGFLGQGSSGEAALDVLTHVLEGAGNKL TSSCGKPSSNRMSLQWTAVATFLYAEVFFVLLLCIPFISPKRWQKIFKSRLVELLSVY GNTFFVVLIVLVLVIDAVREIRKYDDVTEKVNLNQNNPGAMEHFHMKLFRAQRNLYIA GFSLLLSFLLRRLVTLISQQATLLASNEAFKKQAESASEAAKKYMEENDQLKKGAAV DGGKLDVGNAEVKLEENRSLKADLQKLKDELASTKQKLEKAENQVLAMRKQSEGL

 Tel: 1-631-559-9269    1-516-512-3133

 Email: [info@creative-biomart.com](mailto:info@creative-biomart.com)     Fax: 1-631-938-8127

 45-1 Ramsey Road, Shirley, NY 11967, USA

TKEYDRLLEEHA KLQAAVDGPM DKKEETRTRPLEQKLISEEDLAANDILDYKDDDDK  
V

**Purity** > 80% as determined by SDS-PAGE and Coomassie blue staining

**Stability** Stable for 3 months from receipt of products under proper storage and handling conditions.

**Storage** Store at -80 centigrade. Avoid repeated freeze-thaw cycles.

**Concentration** 50 µg/mL as determined by BCA

**Storage Buffer** 100 mM glycine, 25 mM Tris-HCl, pH 7.3.

## GENE INFORMATION

**Gene Name** BCAP31 B-cell receptor-associated protein 31 [ Homo sapiens (human) ]

**Official Symbol** BCAP31

**Synonyms** BCAP31; B-cell receptor-associated protein 31; 6C6 Ag; BAP31; CDM; DXS1357E; p28 Bap31; BCR-associated protein Bap31; 6C6-AG tumor-associated antigen; 6C6-AG;

**Gene ID** 10134

**mRNA Refseq** NM\_001139457

**Protein Refseq** NP\_001132929

**MIM** 300398

 Tel: 1-631-559-9269 1-516-512-3133

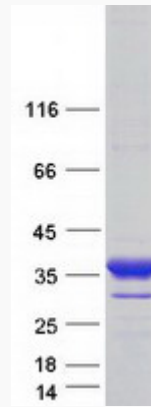
 Email: [info@creative-biomart.com](mailto:info@creative-biomart.com)  Fax: 1-631-938-8127

 45-1 Ramsey Road, Shirley, NY 11967, USA

UniProt ID

P51572

SDS-PAGE



 Tel: 1-631-559-9269 1-516-512-3133

 Email: [info@creative-biomart.com](mailto:info@creative-biomart.com)  Fax: 1-631-938-8127

 45-1 Ramsey Road, Shirley, NY 11967, USA