

Recombinant Human BCAP31 Protein, Myc/DDK-tagged, C13 and N15-labeled

Cat. No. BCAP31-5754H **Lot. No.** (See product label)

SPECIFICATION

Product Overview

BCAP31 MS Standard C13 and N15-labeled recombinant protein (NP_001132913) with a C-terminal MYC/DDK tag, was expressed in HEK293 cells.

Species

Human

Source

HEK293

Description

This gene encodes a member of the B-cell receptor associated protein 31 superfamily. The encoded protein is a multi-pass transmembrane protein of the endoplasmic reticulum that is involved in the anterograde transport of membrane proteins from the endoplasmic reticulum to the Golgi and in caspase 8-mediated apoptosis. Microdeletions in this gene are associated with contiguous ABCD1/DXS1375E deletion syndrome (CADD5), a neonatal disorder. Alternative splicing of this gene results in multiple transcript variants. Two related pseudogenes have been identified on chromosome 16.

Molecular Mass

28 kDa

AA Sequence

MSLQWTAVATFLYAEVFFVLLLCIPFISPKRWQKIFKSRLVELLVSYGNTFFVVLIVILV
LLVIDAVREIREYDDVTEKVNQLQNNPGAMEHFHMKLFRAQRNLYIAGFSLLSFLLRR
LVTLISQQATLLASNEAFKKQAESASEAAKKYMEENDQLKKGAAVDGGKLDVGNAE
VKLEENRSLKADLQKLKDELASTKQKLEKAENQVLAMRKQSEGLTKEYDRLLLEEHA
KLQAAVDGPMDDKKEETRTRPLEQKLISEEDLAANDILDYKDDDDKV

 Tel: 1-631-559-9269 1-516-512-3133

 Email: info@creative-biomart.com  Fax: 1-631-938-8127

 45-1 Ramsey Road, Shirley, NY 11967, USA

| | |
|-----------------------|--|
| Purity | > 80% as determined by SDS-PAGE and Coomassie blue staining |
| Stability | Stable for 3 months from receipt of products under proper storage and handling conditions. |
| Storage | Store at -80 centigrade. Avoid repeated freeze-thaw cycles. |
| Concentration | 50 µg/mL as determined by BCA |
| Storage Buffer | 100 mM glycine, 25 mM Tris-HCl, pH 7.3. |

GENE INFORMATION

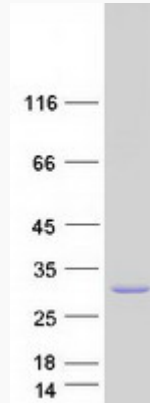
| | |
|------------------------|--|
| Gene Name | BCAP31 B-cell receptor-associated protein 31 [Homo sapiens (human)] |
| Official Symbol | BCAP31 |
| Synonyms | BCAP31; B-cell receptor-associated protein 31; 6C6 Ag; BAP31; CDM; DXS1357E; p28 Bap31; BCR-associated protein Bap31; 6C6-AG tumor-associated antigen; 6C6-AG; |
| Gene ID | 10134 |
| mRNA Refseq | NM_001139441 |
| Protein Refseq | NP_001132913 |
| MIM | 300398 |
| UniProt ID | P51572 |

 Tel: 1-631-559-9269 1-516-512-3133

 Email: info@creative-biomart.com  Fax: 1-631-938-8127

 45-1 Ramsey Road, Shirley, NY 11967, USA

SDS-PAGE



 Tel: 1-631-559-9269 1-516-512-3133

 Email: info@creative-biomart.com  Fax: 1-631-938-8127

 45-1 Ramsey Road, Shirley, NY 11967, USA