

# Recombinant Full Length Human BCAR3 Protein, C-Flag-tagged

Cat. No. BCAR3-1759HFL    Lot. No. (See product label)

## SPECIFICATION

<b>Product Overview</b>	Recombinant Full Length Human BCAR3 Protein, fused to Flag-tag at C-terminus, was expressed in Mammalian cells.
<b>Species</b>	Human
<b>Source</b>	Mammalian Cells
<b>Description</b>	Breast tumors are initially dependent on estrogens for growth and progression and can be inhibited by anti-estrogens such as tamoxifen. However, breast cancers progress to become anti-estrogen resistant. Breast cancer anti-estrogen resistance gene 3 was identified in the search for genes involved in the development of estrogen resistance. The gene encodes a component of intracellular signal transduction that causes estrogen-independent proliferation in human breast cancer cells. The protein contains a putative src homology 2 (SH2) domain, a hall mark of cellular tyrosine kinase signaling molecules, and is partly homologous to the cell division cycle protein CDC48. Multiple transcript variants encoding different isoforms have been found for this gene.
<b>Form</b>	25 mM Tris HCl, pH 7.3, 100 mM glycine, 10% glycerol.
<b>Molecular Mass</b>	92.4 kDa
<b>AA Sequence</b>	MAAGKFASLPRNMPVNHQFPLASSMDLLSSRSPLAEHRPDAYQDVSIHGTLPRKKK GPPPIRSCDDDFSHM GTLPHSKSPRQNSPVTQDGIQESPWQDRHGGETFTFRDPHLL

 Tel: 1-631-559-9269    1-516-512-3133

 Email: [info@creative-biomart.com](mailto:info@creative-biomart.com)     Fax: 1-631-938-8127

 45-1 Ramsey Road, Shirley, NY 11967, USA

DPTVEYVKFSKERHIMDRTPPEKLLKELEE ELLSSEDLRSHAWYHGRIPRQVSENLV  
 QRDGDFLVRDSLSSPGNFVLTQCQWKNLAQHFKINRTVLRLE AYSRVQYQFEMES  
 FDSIPGLVRCYVGNRRPISQQSGAIIQPINRTVPLRCLEEHYGTSPGQAREGSLTK  
 GRPDVAKRLSLTMGGVQAREQNLPRGNLLRNKEKSGSQPACLDHMQDRRALSLSKA  
 HQSESYLPIGCKLPP QSSGVDTSPCPNSPVFRTGSEPALSPAVVRRVSSDARAGEA  
 LRGSDSQLCPKPPPCKVPFLKVPSSPS AWLNSEANYCELNPAFATGCGRGAKL  
 PSCAQGSHTELLTAKQNEAPGPRNSGVNYLILDDDDRRERPWEPA AAQMEKGQWD  
 KGEFVTPLLETVSSFRPNEFESKFLPPENKPLETAMLKRAKELFTNNDPKVIAQHVLS  
 MD CRVARILGVSEEMRRNMGVSSGLELITLPHGHQLRLDIIRHNTMAIGIAVDILGC  
 TGTLEDRAATLSKI IQVAVELKDSMGDLYSFSALMKALEMPQITRLEKTWTALRHQY  
 TQTAILYEKQLKPFKLLHEGRESTCV PPNNVSVPLLMPLVTLMERQAVTFEGTDM  
 WEKNDQSCEIMLNHLATARFMAEAADSYRMNAERILAGFQP  
 DEEMNEICKTEFQMRLWWSKGAQVNQTERYEFNQILTALSRKLEPPPVKQAELT  
 RTRPLEQKLISEEDLAANDILDYKDDDDKV

<b>Purity</b>	> 80% as determined by SDS-PAGE and Coomassie blue staining.
<b>Stability</b>	Stable for 12 months from the date of receipt of the product under proper storage and handling conditions. Avoid repeated freeze-thaw cycles.
<b>Storage</b>	Store at -80 centigrade.
<b>Concentration</b>	>50 ug/mL as determined by microplate BCA method.
<b>Preparation</b>	Recombinant protein was captured through anti-DDK affinity column followed by conventional chromatography steps.
<b>Protein Families</b>	Druggable Genome
<b>Full Length</b>	Full L.

 Tel: 1-631-559-9269 1-516-512-3133

 Email: [info@creative-biomart.com](mailto:info@creative-biomart.com)  Fax: 1-631-938-8127

 45-1 Ramsey Road, Shirley, NY 11967, USA

## GENE INFORMATION

**Gene Name** BCAR3 BCAR3 adaptor protein, NSP family member [ Homo sapiens (human) ]

**Official Symbol** BCAR3

**Synonyms** MIG7; NSP2; AND-34; SH2D3B

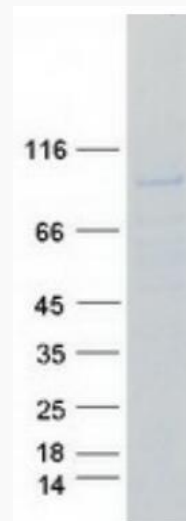
**Gene ID** 8412


**mRNA Refseq** NM\_003567.4

**Protein Refseq** NP\_003558.1

**MIM** 604704

**UniProt ID** O75815



 Tel: 1-631-559-9269 1-516-512-3133

 Email: [info@creative-biomart.com](mailto:info@creative-biomart.com)  Fax: 1-631-938-8127

 45-1 Ramsey Road, Shirley, NY 11967, USA



Coomassie blue staining of purified BCAR3 protein.

 Tel: 1-631-559-9269 1-516-512-3133

 Email: [info@creative-biomart.com](mailto:info@creative-biomart.com)  Fax: 1-631-938-8127

 45-1 Ramsey Road, Shirley, NY 11967, USA