

## Recombinant Human BCAS1 Protein, GST-tagged

Cat. No. BCAS1-123H Lot. No. (See product label)

### SPECIFICATION

<b>Product Overview</b>	Human BCAS1 full-length ORF (ADR83077.1, 1 a.a. - 584 a.a.) recombinant protein with GST tag at N-terminal.
<b>Species</b>	Human
<b>Source</b>	Wheat Germ
<b>Description</b>	This gene resides in a region at 20q13 which is amplified in a variety of tumor types and associated with more aggressive tumor phenotypes. Among the genes identified from this region, it was found to be highly expressed in three amplified breast cancer cell lines and in one breast tumor without amplification at 20q13.2. However, this gene is not in the common region of maximal amplification and its expression was not detected in the breast cancer cell line MCF7, in which this region is highly amplified. Although not consistently expressed, this gene is a candidate oncogene.
<b>Form</b>	50 mM Tris-HCl, 10 mM reduced Glutathione, pH=8.0 in the elution buffer.
<b>Molecular Mass</b>	90.7 kDa
<b>AA Sequence</b>	MGNQMSPQRVEDQENEPEAETYKDNASALNGVPVVVSTHTVQHLEEVDLGISVK TDNVATSSPETTEISAVADANGKNLGKEAKPEAPAAKSRFFLMLSRPVPGRGTGDQA ADSSLGSKLDVSSNKAPANKDPSESWTLPVAAGPGQDTPGHAPAQDKALSA ARDPTLLPPETGGAGGEAPSKPKDSSFFDKFFKLDKGQEKVPGDSQQEAKRAEHQ DKVDEVPLSGQSDDVPAGKDIVDGKEKEGQELGTADCSVPGDPEGLETAKDDSQ AAIAENNSIMSFFKTLVSPNKAETKKDPEDTGAEKSPPTSADLKSDKANFTSQET

 Tel: 1-631-559-9269 1-516-512-3133

 Email: [info@creative-biomart.com](mailto:info@creative-biomart.com)  Fax: 1-631-938-8127

 45-1 Ramsey Road, Shirley, NY 11967, USA

QGAGKNSKGCNPSGHTQSVTTPEPAKEGTKEKSGPTSLPLGKLFWKKSVKEDSVP  
 TGAEENVVCEPVEIIKSKEVESALQTVDLNEGDAAPEPTEAKLKREESKPRTSLMA  
 FLRQMSVKGDGGITHSEEINGKDSSCQTSDESTKITPPEPEPTGAPQKGKEGSSK  
 DKKSAAEMNKQKSNKQEAKEPAQCTEQATVDTNSLQNGDKLQKRPEKRQQSLGG  
 FFKGLGPKRMLDAQVQTDVPVSIQVVGKSK

<b>Notes</b>	Best use within three months from the date of receipt of this protein.
<b>Storage</b>	Store at -80 centigrade. Aliquot to avoid repeated freezing and thawing.
<b>Storage Buffer</b>	50 mM Tris-HCl, 10 mM reduced Glutathione, pH=8.0 in the elution buffer.

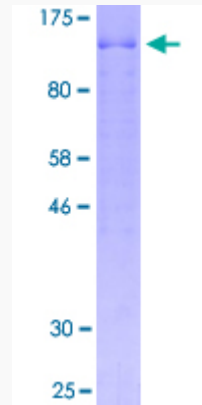
## GENE INFORMATION

<b>Gene Name</b>	BCAS1 breast carcinoma amplified sequence 1 [ Homo sapiens ]
<b>Official Symbol</b>	BCAS1
<b>Synonyms</b>	BCAS1; breast carcinoma amplified sequence 1; breast carcinoma-amplified sequence 1; AIBC1; NABC1; novel amplified in breast cancer 1; amplified and overexpressed in breast cancer;
<b>Gene ID</b>	8537
<b>mRNA Refseq</b>	NM_003657
<b>Protein Refseq</b>	NP_003648
<b>MIM</b>	602968
<b>UniProt ID</b>	O75363

 Tel: 1-631-559-9269 1-516-512-3133

 Email: [info@creative-biomart.com](mailto:info@creative-biomart.com)
 Fax: 1-631-938-8127

 45-1 Ramsey Road, Shirley, NY 11967, USA



Tel: 1-631-559-9269 1-516-512-3133

Email: [info@creative-biomart.com](mailto:info@creative-biomart.com) Fax: 1-631-938-8127

45-1 Ramsey Road, Shirley, NY 11967, USA