

Recombinant Human BCAS1 Protein, GST-tagged

Cat. No. BCAS1-124H Lot. No. (See product label)

SPECIFICATION

Product Overview	Human BCAS1 partial ORF (NP_003648, 1 a.a. - 80 a.a.) recombinant protein with GST-tag at N-terminal.
Species	Human
Source	Wheat Germ
Description	This gene resides in a region at 20q13 which is amplified in a variety of tumor types and associated with more aggressive tumor phenotypes. Among the genes identified from this region, it was found to be highly expressed in three amplified breast cancer cell lines and in one breast tumor without amplification at 20q13.2. However, this gene is not in the common region of maximal amplification and its expression was not detected in the breast cancer cell line MCF7, in which this region is highly amplified. Although not consistently expressed, this gene is a candidate oncogene.
Form	50 mM Tris-HCl, 10 mM reduced Glutathione, pH=8.0 in the elution buffer.
Molecular Mass	34.54 kDa
AA Sequence	MGNQMSVPQRVEDQENEPEAETYQDNASALNGVPVVVSTHTVQHLEEVDLGISVK TDNVATSSPETTEISAVADANGKNL
Purity	Glutathione Sepharose 4 Fast Flow
Notes	Best use within three months from the date of receipt of this protein.

 Tel: 1-631-559-9269 1-516-512-3133

 Email: info@creative-biomart.com  Fax: 1-631-938-8127

 45-1 Ramsey Road, Shirley, NY 11967, USA

Storage Store at -80 centigrade. Aliquot to avoid repeated freezing and thawing.

Storage Buffer 50 mM Tris-HCl, 10 mM reduced Glutathione, pH=8.0 in the elution buffer.

GENE INFORMATION

Gene Name [BCAS1 breast carcinoma amplified sequence 1 \[Homo sapiens \]](#)

Official Symbol [BCAS1](#)

Synonyms BCAS1; breast carcinoma amplified sequence 1; breast carcinoma-amplified sequence 1; AIBC1; NABC1; novel amplified in breast cancer 1; amplified and overexpressed in breast cancer;

Gene ID [8537](#)

mRNA Refseq [NM_003657](#)

Protein Refseq [NP_003648](#)

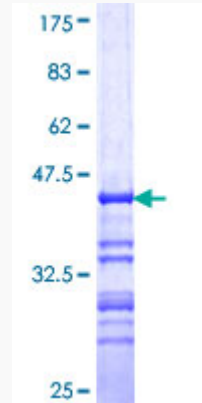
MIM [602968](#)

UniProt ID [O75363](#)

 Tel: 1-631-559-9269 1-516-512-3133

 Email: info@creative-biomart.com  Fax: 1-631-938-8127

 45-1 Ramsey Road, Shirley, NY 11967, USA



 Tel: 1-631-559-9269 1-516-512-3133

 Email: info@creative-biomart.com  Fax: 1-631-938-8127

 45-1 Ramsey Road, Shirley, NY 11967, USA