

Recombinant Human BCAS2 Protein, GST-tagged

Cat. No. BCAS2-125H Lot. No. (See product label)

SPECIFICATION

Product Overview	Human BCAS2 full-length ORF (AAH05285.1, 1 a.a. - 225 a.a.) recombinant protein with GST-tag at N-terminal.
Species	Human
Source	Wheat Germ
Form	50 mM Tris-HCl, 10 mM reduced Glutathione, pH=8.0 in the elution buffer.
Molecular Mass	50.38 kDa
AA Sequence	MAGTGLVAGEVVVDALPYFDQGYEAPGVREAAAALVEEETRRYRPTKNYLSYLTAP DYSAFETDIMRNEFERLAARQPIELLSMKRYELPAPSSGQKNDITAWQECVNNSMA QLEHQAVRIENLELMSQHGCNAWKVYNENLVHMIHAQKELQKLRKHIQDLNWQRK NMQLTAGSKLREMESNWVSLVSKNYEIERTIVQLENEIYQIKQQHGEANKENIRQDF
Notes	Best use within three months from the date of receipt of this protein.
Storage	Store at -80 centigrade. Aliquot to avoid repeated freezing and thawing.
Storage Buffer	50 mM Tris-HCl, 10 mM reduced Glutathione, pH=8.0 in the elution buffer.

GENE INFORMATION

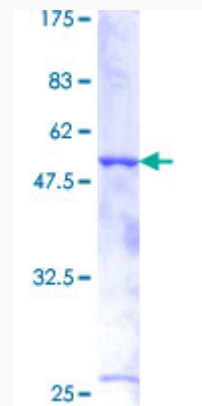
Gene Name	BCAS2 breast carcinoma amplified sequence 2 [Homo sapiens]
------------------	--

 Tel: 1-631-559-9269 1-516-512-3133

 Email: info@creative-biomart.com  Fax: 1-631-938-8127

 45-1 Ramsey Road, Shirley, NY 11967, USA

Official Symbol	BCAS2
Synonyms	BCAS2; breast carcinoma amplified sequence 2; pre-mRNA-splicing factor SPF27; DAM1; Snt309; SPF27; breast carcinoma-amplified sequence 2; spliceosome-associated protein SPF 27; DNA amplified in mammary carcinoma 1 protein; spliceosome associated protein, amplified in breast cancer;
Gene ID	10286
mRNA Refseq	NM_005872
Protein Refseq	NP_005863
MIM	605783
UniProt ID	O75934



 Tel: 1-631-559-9269 1-516-512-3133

 Email: info@creative-biomart.com  Fax: 1-631-938-8127

 45-1 Ramsey Road, Shirley, NY 11967, USA