

## Recombinant Human BCAT1 Protein, GST-tagged

Cat. No. BCAT1-129H Lot. No. (See product label)

### SPECIFICATION

<b>Product Overview</b>	Human BCAT1 full-length ORF ( AAH33864, 1 a.a. - 320 a.a.) recombinant protein with GST-tag at N-terminal.
<b>Species</b>	Human
<b>Source</b>	Wheat Germ
<b>Description</b>	This gene encodes the cytosolic form of the enzyme branched-chain amino acid transaminase. This enzyme catalyzes the reversible transamination of branched-chain alpha-keto acids to branched-chain L-amino acids essential for cell growth. Two different clinical disorders have been attributed to a defect of branched-chain amino acid transamination: hypervalinemia and hyperleucine-isoleucinemia. As there is also a gene encoding a mitochondrial form of this enzyme, mutations in either gene may contribute to these disorders.
<b>Form</b>	50 mM Tris-HCl, 10 mM reduced Glutathione, pH=8.0 in the elution buffer.
<b>Molecular Mass</b>	60.94 kDa
<b>AA Sequence</b>	MDCSNGCSAECTGEGGSKEVVGTFKAKDLIVTPATILKEKPDNNLVFGTVFTDHML TVEWSSEFGWEKPHIKPLQNLSLHPGSSALHYAVELFEGKAFRGVDNKIRLFQPNL NMDRMYSRAVRATLPVFDKEELLECIQQLVKLDQEWVPYSTSASLYIRPTFIGTEPSL GVKKPTKALLFVLLSPVGPYFSSGTFNPVSLWANPKYVRAWKGGTGDCKMGGNYG SSLFAQCEAVDNGCQQVLWLYGEDHQITEVGTMNLFLYWINEDGEEELATPPLDGII LPGVTRRCILDLAHQWDETELSLFSINLPDFLQFIYF

 Tel: 1-631-559-9269 1-516-512-3133

 Email: [info@creative-biomart.com](mailto:info@creative-biomart.com)  Fax: 1-631-938-8127

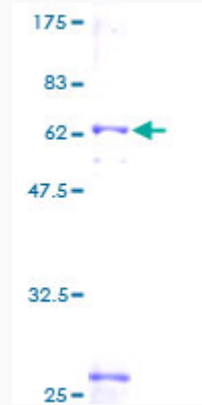
 45-1 Ramsey Road, Shirley, NY 11967, USA

<b>Notes</b>	Best use within three months from the date of receipt of this protein.
<b>Storage</b>	Store at -80 centigrade. Aliquot to avoid repeated freezing and thawing.
<b>Storage Buffer</b>	50 mM Tris-HCl, 10 mM reduced Glutathione, pH=8.0 in the elution buffer.
<b>GENE INFORMATION</b>	
<b>Gene Name</b>	BCAT1 branched chain amino-acid transaminase 1, cytosolic [ Homo sapiens ]
<b>Official Symbol</b>	BCAT1
<b>Synonyms</b>	BCAT1; branched chain amino-acid transaminase 1, cytosolic; BCT1, branched chain aminotransferase 1, cytosolic; branched-chain-amino-acid aminotransferase, cytosolic; placental protein 18; branched chain aminotransferase 1, cytosolic; BCT1; PP18; BCATC; ECA39; MECA39; PNAS121; DKFZp686E12175;
<b>Gene ID</b>	586
<b>mRNA Refseq</b>	NM_001178091
<b>Protein Refseq</b>	NP_001171562
<b>MIM</b>	113520
<b>UniProt ID</b>	P54687

 Tel: 1-631-559-9269 1-516-512-3133

 Email: [info@creative-biomart.com](mailto:info@creative-biomart.com)  Fax: 1-631-938-8127

 45-1 Ramsey Road, Shirley, NY 11967, USA



Tel: 1-631-559-9269 1-516-512-3133

Email: [info@creative-biomart.com](mailto:info@creative-biomart.com) Fax: 1-631-938-8127

45-1 Ramsey Road, Shirley, NY 11967, USA