

Recombinant Full Length Human BCAT1 Protein, C-Flag-tagged

Cat. No. BCAT1-907HFL **Lot. No.** (See product label)

SPECIFICATION

Product Overview	Recombinant Full Length Human BCAT1 Protein, fused to Flag-tag at C-terminus, was expressed in Mammalian cells.
Species	Human
Source	Mammalian Cells
Description	This gene encodes the cytosolic form of the enzyme branched-chain amino acid transaminase. This enzyme catalyzes the reversible transamination of branched-chain alpha-keto acids to branched-chain L-amino acids essential for cell growth. Two different clinical disorders have been attributed to a defect of branched-chain amino acid transamination: hypervalinemia and hyperleucine-isoleucinemia. As there is also a gene encoding a mitochondrial form of this enzyme, mutations in either gene may contribute to these disorders. Alternatively spliced transcript variants have been described.
Form	25 mM Tris HCl, pH 7.3, 100 mM glycine, 10% glycerol.
Molecular Mass	42.8 kDa
AA Sequence	MKDCSNGCSAECTGEGGSKEVVGTFKAKDLIVTPATILKEKPDNNLVFGTVFTDHMLTVEWSSEFGWEK PHIKPLQNLSSLHPGSSALHYAVELFEGLKAFRGVDNKIRLFQPNLNMDRMYRSAVRATLPVFDKEELLEC IQQLVKLDQEWVPYSTSASLYIRPTFIGTEPSLGVKKPTKALLFVLLSPVGPYFSSGTFNPNVSLWANPKY VRAWKGGTGDCKMGG

 Tel: 1-631-559-9269 1-516-512-3133

 Email: info@creative-biomart.com  Fax: 1-631-938-8127

 45-1 Ramsey Road, Shirley, NY 11967, USA



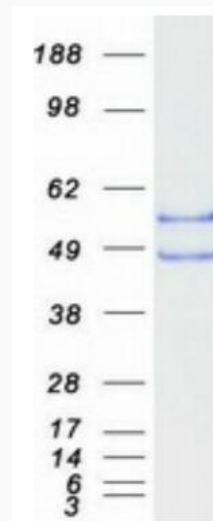
NYGSSLFAQCEAVDNGCQQVLWLYGEDHQITEVGTMNFLYWINEDGEEEELATPP
 LDGIILPGVTRRCILDLAHQWGEFKVSERYLTMDDLTTALEGNRVREMFSGGTACVV
 CPVSDILYKGETI
 HIPTMENGPKLASRILSKLTDIQYGREESDWTIVLSTRTRPLEQKLISEEDLAANDILD
 YKDDDDKV

Purity	> 80% as determined by SDS-PAGE and Coomassie blue staining.
Stability	Stable for 12 months from the date of receipt of the product under proper storage and handling conditions. Avoid repeated freeze-thaw cycles.
Storage	Store at -80 centigrade.
Concentration	>50 ug/mL as determined by microplate BCA method.
Preparation	Recombinant protein was captured through anti-DDK affinity column followed by conventional chromatography steps.
Protein Families	Druggable Genome
Protein Pathways	Metabolic pathways, Pantothenate and CoA biosynthesis, Valine, leucine and isoleucine biosynthesis, Valine, leucine and isoleucine degradation
Full Length	Full L.

GENE INFORMATION

Gene Name	BCAT1 branched chain amino acid transaminase 1 [Homo sapiens (human)]
Official Symbol	BCAT1

Synonyms	BCT1; PP18; BCATC; ECA39; MECA39; PNAS121
Gene ID	586
mRNA Refseq	NM_005504.7
Protein Refseq	NP_005495.2
MIM	113520
UniProt ID	P54687



Coomassie blue staining of purified BCAT1 protein.

 Tel: 1-631-559-9269 1-516-512-3133

 Email: info@creative-biomart.com  Fax: 1-631-938-8127

 45-1 Ramsey Road, Shirley, NY 11967, USA