

## Recombinant Human BCAT2 protein, His-tagged

Cat. No. BCAT2-10170H Lot. No. (See product label)

### SPECIFICATION

<b>Product Overview</b>	Recombinant Human BCAT2 protein(41-392 aa), fused with N-terminal His tag, was expressed in E.coli.
<b>Species</b>	Human
<b>Source</b>	E.coli
<b>ProteinLength</b>	41-392 aa
<b>Form</b>	The purified protein was Lyophilized from sterile PBS (58mM Na <sub>2</sub> HPO <sub>4</sub> , 17mM NaH <sub>2</sub> PO <sub>4</sub> , 68mM NaCl, pH7.4). 5 % trehalose and 5 % mannitol are added as protectant before lyophilization. The elution buffer contain 300mM imidazole.
<b>AASequence</b>	MTQKPHKKPGGPEPLVFGKTFTDHMLMVEWNDKGGWQPRIQPFQNLTLHPASSSL HYSLQLFEGMKAFKGGKDDQVRLFRPWLNMDRMLRSAMRLCLPSFDKLELLECIRRL IEVDKDWVPDAAGTSLYVRPVLIGNEPSLGVSQPTRALLFVILCPVGAYFPGGSVTPV SLLADPAFIRAWVGGVGNKLGNYGPTVLVQQEALKRGCEQVLWLYGPDHQLTE VGTMNIFVYWTHEDGVLELVTPPLNGVILPGVVRQSLDMAQTWGEFRVVERTITMK QLLRAL E EGRVREVFSGTACQVCPVHRILYKDRNLHIPTMENGPELILRFQKELKEI QYGIRAH EWMFPV
<b>Purity</b>	85%, by SDS-PAGE with Coomassie Brilliant Blue staining.
<b>Storage</b>	Store at 2-8°C for 1-2 weeks. Aliquot and store at -20°C to -80°C for up to 3 months, reconstitution with sterile water and addition of an equal volume of glycerol. Avoid

 Tel: 1-631-559-9269 1-516-512-3133

 Email: [info@creative-biomart.com](mailto:info@creative-biomart.com)  Fax: 1-631-938-8127

 45-1 Ramsey Road, Shirley, NY 11967, USA

repeat freeze-thaw cycles.

**Reconstitution**

Dissolve the product in 200 µl sterile water to achieve a working concentration of 0.25 g/µl. If experimental compatibility allows, mix the aqueous solution with an equal volume of glycerol (1:1 ratio) after initial reconstitution.

## GENE INFORMATION

**Gene Name** [BCAT2 branched chain amino-acid transaminase 2, mitochondrial \[ Homo sapiens \]](#)

**Official Symbol** [BCAT2](#)

**Synonyms**

BCAT2; branched chain amino-acid transaminase 2, mitochondrial; BCT2, branched chain aminotransferase 2, mitochondrial; branched-chain-amino-acid aminotransferase, mitochondrial; BCAM; placental protein 18; branched chain aminotransferase 2, mitochondrial; BCT2; PP18; BCATM;

**Gene ID** [587](#)

**mRNA Refseq** [NM\\_001164773](#)

**Protein Refseq** [NP\\_001158245](#)

**MIM** [113530](#)

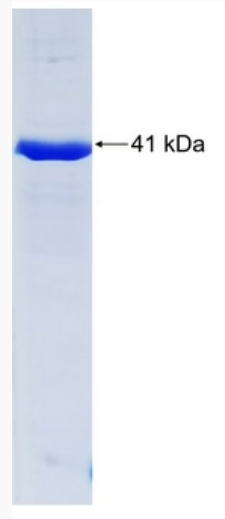
**UniProt ID** [O15382](#)

 Tel: 1-631-559-9269 1-516-512-3133

 Email: [info@creative-biomart.com](mailto:info@creative-biomart.com)  Fax: 1-631-938-8127

 45-1 Ramsey Road, Shirley, NY 11967, USA

**SDS-PAGE**



 Tel: 1-631-559-9269 1-516-512-3133

 Email: [info@creative-biomart.com](mailto:info@creative-biomart.com)  Fax: 1-631-938-8127

 45-1 Ramsey Road, Shirley, NY 11967, USA