

# Recombinant Full Length Human BCAT2 Protein, C-Flag-tagged

Cat. No. BCAT2-575HFL    Lot. No. (See product label)

## SPECIFICATION

|                         |   |
|-------------------------|---|
| <b>Product Overview</b> | Recombinant Full Length Human BCAT2 Protein, fused to Flag-tag at C-terminus, was expressed in Mammalian cells.   |
| <b>Species</b>          | Human   |
| <b>Source</b>           | Mammalian Cells   |
| <b>Description</b>      | This gene encodes a branched chain aminotransferase found in mitochondria. The encoded protein forms a dimer that catalyzes the first step in the production of the branched chain amino acids leucine, isoleucine, and valine. Multiple transcript variants encoding different isoforms have been found for this gene.   |
| <b>Form</b>             | 25 mM Tris HCl, pH 7.3, 100 mM glycine, 10% glycerol.   |
| <b>Molecular Mass</b>   | 41.2 kDa  |
| <b>AA Sequence</b>      | <p>MAAAALGQIWARKLLSVPWLLCGPRRYASSSFKAADLQLEMTQKPHKKPGPGEPLV<br/> FGKFTFDHMLMVEW NDKGWGQPRIQPFQNLTLHPASSSLHYSLQLFEGMKAFK GK<br/> DQQVRLFRPWLNM DRMLRSAMRLCLPSFD KLELLECIRRLIEVDKDWVPDAAGTSL<br/> YVRPVLIGNEPSLGV SQPTRALLFVILCPVGAYFPGGSVTPVS LLADPAFIRAWVGG<br/> VGNYKLG GNYGPTVLVQQEALKRGCEQVLWLYGPDHQLTEVGT MNIFVYWTHEDG<br/> V LELVTPPLNGVILPGVVRQSLLDMAQTWGEFRVVERTITMKQLLRAL EEGRVREVF<br/> GSGTACQVCPVHRI<br/> LYKDRNLHIPTMENGPELILRFQKELKEIQYGIRAH EWMFPVTRTRPLEQKLISEEDLA</p> |

 Tel: 1-631-559-9269    1-516-512-3133

 Email: [info@creative-biomart.com](mailto:info@creative-biomart.com)     Fax: 1-631-938-8127

 45-1 Ramsey Road, Shirley, NY 11967, USA

|                         |  |
|-------------------------|--|
|                         | ANDILDYKDDDDKV   |
| <b>Purity</b>           | > 80% as determined by SDS-PAGE and Coomassie blue staining.   |
| <b>Stability</b>        | Stable for 12 months from the date of receipt of the product under proper storage and handling conditions. Avoid repeated freeze-thaw cycles.  |
| <b>Storage</b>          | Store at -80 centigrade.   |
| <b>Concentration</b>    | >50 ug/mL as determined by microplate BCA method.  |
| <b>Preparation</b>      | Recombinant protein was captured through anti-DDK affinity column followed by conventional chromatography steps.                               |
| <b>Protein Families</b> | Druggable Genome   |
| <b>Protein Pathways</b> | Metabolic pathways, Pantothenate and CoA biosynthesis, Valine, leucine and isoleucine biosynthesis, Valine, leucine and isoleucine degradation |
| <b>Full Length</b>      | Full L.  |
| <b>GENE INFORMATION</b> |  |
| <b>Gene Name</b>        | BCAT2 branched chain amino acid transaminase 2 [ Homo sapiens (human) ]  |
| <b>Official Symbol</b>  | BCAT2  |
| <b>Synonyms</b>         | BCAM; BCT2; HVLI; PP18; BCATM  |
| <b>Gene ID</b>          | 587  |

 Tel: 1-631-559-9269 1-516-512-3133

 Email: [info@creative-biomart.com](mailto:info@creative-biomart.com)  Fax: 1-631-938-8127

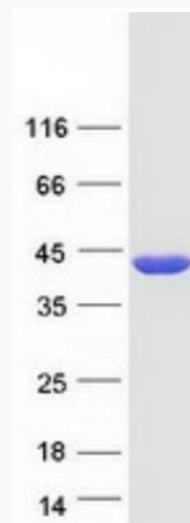
 45-1 Ramsey Road, Shirley, NY 11967, USA

mRNA Refseq [NM\\_001190.4](#)

Protein Refseq [NP\\_001181.2](#)

MIM [113530](#)

UniProt ID [O15382](#)



Coomassie blue staining of purified BCAT2 protein.

 Tel: 1-631-559-9269 1-516-512-3133

 Email: [info@creative-biomart.com](mailto:info@creative-biomart.com)  Fax: 1-631-938-8127

 45-1 Ramsey Road, Shirley, NY 11967, USA