

# Recombinant Human BCAT2 Protein, Myc/DDK-tagged, C13 and N15-labeled

**Cat. No.** BCAT2-672H    **Lot. No.** (See product label)

## SPECIFICATION

<b>Product Overview</b>	BCAT2 MS Standard C13 and N15-labeled recombinant protein (NP_001181) with a C-terminal MYC/DDK tag, was expressed in HEK293 cells.
<b>Species</b>	Human
<b>Source</b>	HEK293
<b>Description</b>	This gene encodes a branched chain aminotransferase found in mitochondria. The encoded protein forms a dimer that catalyzes the first step in the production of the branched chain amino acids leucine, isoleucine, and valine. Multiple transcript variants encoding different isoforms have been found for this gene.
<b>Molecular Mass</b>	44.3 kDa
<b>AA Sequence</b>	<p>MAAAALGQIWARKLLSVPWLLCGPRRYASSSFKAADLQLEMTQKPHKKPGPGGEPLV  FGKTFDTHMLMVEWVNDKGGWQPRIQPFQNLTLHPASSSLHYSLQLFEGMKAFKGGK  DQQVRLFRPWLNMDRMLRSAMRLCLPSFDKLELLECIRRLIEVDKDWVPDAAGTSL  YVRPVLIGNEPSLGVSQPTRALLFVILCPVGAYFPGGSVTPVSLLADPAFIRAWVGGV  GNYKLGNYGPTVLVQQEALKRGCEQVLWLYGPDHQLTEVGTMNIFVYWTHEDGV  LELVTPPLNGVILPGVVRQSLLDMAQWGEFRVVERTITMKQLLRALLEEGRVREVFV  SGTACQVCPVHRILYKDRNLHIPTMENGPELILRFQKELKEIQYGIRAHWMMFPVTRT  RPLEQKLISEEDLAANDILDYKDDDDKV</p>
<b>Purity</b>	> 80% as determined by SDS-PAGE and Coomassie blue staining

 Tel: 1-631-559-9269    1-516-512-3133

 Email: [info@creative-biomart.com](mailto:info@creative-biomart.com)     Fax: 1-631-938-8127

 45-1 Ramsey Road, Shirley, NY 11967, USA

<b>Stability</b>	Stable for 3 months from receipt of products under proper storage and handling conditions.
<b>Storage</b>	Store at -80 centigrade. Avoid repeated freeze-thaw cycles.
<b>Concentration</b>	50 µg/mL as determined by BCA
<b>Storage Buffer</b>	100 mM glycine, 25 mM Tris-HCl, pH 7.3.

## GENE INFORMATION

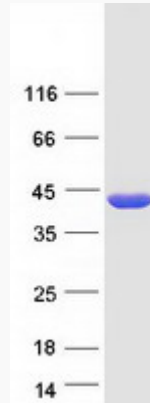
<b>Gene Name</b>	BCAT2 branched chain amino acid transaminase 2 [ Homo sapiens (human) ]
<b>Official Symbol</b>	BCAT2
<b>Synonyms</b>	BCAT2; branched chain amino-acid transaminase 2, mitochondrial; BCT2, branched chain aminotransferase 2, mitochondrial; branched-chain-amino-acid aminotransferase, mitochondrial; BCAM; placental protein 18; branched chain aminotransferase 2, mitochondrial; BCT2; PP18; BCATM;
<b>Gene ID</b>	587
<b>mRNA Refseq</b>	NM_001190
<b>Protein Refseq</b>	NP_001181
<b>MIM</b>	113530
<b>UniProt ID</b>	O15382

 Tel: 1-631-559-9269 1-516-512-3133

 Email: [info@creative-biomart.com](mailto:info@creative-biomart.com)  Fax: 1-631-938-8127

 45-1 Ramsey Road, Shirley, NY 11967, USA

**SDS-PAGE**



 Tel: 1-631-559-9269 1-516-512-3133

 Email: [info@creative-biomart.com](mailto:info@creative-biomart.com)  Fax: 1-631-938-8127

 45-1 Ramsey Road, Shirley, NY 11967, USA