

## Recombinant Human BCCIP Protein, GST-tagged

Cat. No. BCCIP-131H Lot. No. (See product label)

### SPECIFICATION

<b>Product Overview</b>	Human BCCIP full-length ORF ( AAH09771, 1 a.a. - 314 a.a.) recombinant protein with GST-tag at N-terminal.
<b>Species</b>	Human
<b>Source</b>	Wheat Germ
<b>Description</b>	This gene product was isolated on the basis of its interaction with BRCA2 and p21 proteins. It is an evolutionarily conserved nuclear protein with multiple interacting domains. The N-terminal half shares moderate homology with regions of calmodulin and M-calpain, suggesting that it may also bind calcium. Functional studies indicate that this protein may be an important cofactor for BRCA2 in tumor suppression, and a modulator of CDK2 kinase activity via p21. This protein has also been implicated in the regulation of BRCA2 and RAD51 nuclear focus formation, double-strand break-induced homologous recombination, and cell cycle progression. Multiple transcript variants encoding different isoforms have been described for this gene.
<b>Form</b>	50 mM Tris-HCl, 10 mM reduced Glutathione, pH=8.0 in the elution buffer.
<b>Molecular Mass</b>	60.17 kDa
<b>AA Sequence</b>	MASRSKRRAVESGVPQPPDPPVQRDEEEEKEVENEDDDDDSDKEKDEEDEVIDE EVNIEFEAYSLSNDNDYDGIKLLQQLFLKAPVNTAELTDLLIQQNHIGSVIKQTDVSED SNDDMDEDEVFGFISLLNLTERKGTQCVEIQELVLRFCCKNCEKSMVEQLDKFLND TTKPVGLLLSERFINVPPQIALPMYQQLQKELAGAHRTNKPCGKCYFYLLISKTFVEA

 Tel: 1-631-559-9269 1-516-512-3133

 Email: [info@creative-biomart.com](mailto:info@creative-biomart.com)  Fax: 1-631-938-8127

 45-1 Ramsey Road, Shirley, NY 11967, USA

EKNNSKKKPSNKKKAALMFANAEEEEFFYEKAILKFNYSVQEEEDTCLGGKWSFDDV  
PMTPLRTVMLIPGDKMNEIMDKLKEYLSV

**Notes** Best use within three months from the date of receipt of this protein.

**Storage** Store at -80 centigrade. Aliquot to avoid repeated freezing and thawing.

**Storage Buffer** 50 mM Tris-HCl, 10 mM reduced Glutathione, pH=8.0 in the elution buffer.

## GENE INFORMATION

**Gene Name** [BCCIP BRCA2 and CDKN1A interacting protein \[ Homo sapiens \]](#)

**Official Symbol** [BCCIP](#)

**Synonyms** BCCIP; BRCA2 and CDKN1A interacting protein; BRCA2 and CDKN1A-interacting protein; BCCIPalpha; TOK 1; BCCIPbeta; TOK-1beta; TOK-1alpha; protein TOK-1; cdk inhibitor p21 binding protein; p21- and CDK-associated protein 1; BRCA2 and Cip1/p21 interacting protein; TOK1; TOK-1;

**Gene ID** [56647](#)

**mRNA Refseq** [NM\\_016567](#)

**Protein Refseq** [NP\\_057651](#)

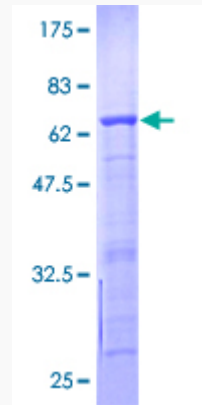
**MIM** [611883](#)

**UniProt ID** [Q9P287](#)

 Tel: 1-631-559-9269 1-516-512-3133

 Email: [info@creative-biomart.com](mailto:info@creative-biomart.com)  Fax: 1-631-938-8127

 45-1 Ramsey Road, Shirley, NY 11967, USA



Tel: 1-631-559-9269 1-516-512-3133

Email: [info@creative-biomart.com](mailto:info@creative-biomart.com) Fax: 1-631-938-8127

45-1 Ramsey Road, Shirley, NY 11967, USA