

Recombinant Full Length Human BCCIP Protein, C-Flag-tagged

Cat. No. BCCIP-344HFL Lot. No. (See product label)

SPECIFICATION

Product Overview	Recombinant Full Length Human BCCIP Protein, fused to Flag-tag at C-terminus, was expressed in Mammalian cells.
Species	Human
Source	Mammalian Cells
Description	This gene product was isolated on the basis of its interaction with BRCA2 and p21 proteins. It is an evolutionarily conserved nuclear protein with multiple interacting domains. The N-terminal half shares moderate homology with regions of calmodulin and M-calpain, suggesting that it may also bind calcium. Functional studies indicate that this protein may be an important cofactor for BRCA2 in tumor suppression, and a modulator of CDK2 kinase activity via p21. This protein has also been implicated in the regulation of BRCA2 and RAD51 nuclear focus formation, double-strand break-induced homologous recombination, and cell cycle progression. Multiple transcript variants encoding different isoforms have been described for this gene.
Form	25 mM Tris HCl, pH 7.3, 100 mM glycine, 10% glycerol.
Molecular Mass	35.8 kDa
AA Sequence	MASRSKRRAVESGVPQPPDPPVQRDEEEEKEVENEDEDDDSDKEKDEEDEVIDE EVNIEFEAYSLSNDND YDGIKLLQLFLKAPVNTAELTDLLIQQNHIGSVIKQTDVSED SNDDMDEDEVFGFISLLNLTERKGTQ CVEQIQELVLRFCCKNCEKSMVEQLDKFLN

 Tel: 1-631-559-9269 1-516-512-3133

 Email: info@creative-biomart.com  Fax: 1-631-938-8127

 45-1 Ramsey Road, Shirley, NY 11967, USA

DTTKPVGLLLSERFINVPPQIALPMYQQLQKELAGAHRTN KPCGKCYFYLLISKTFVE
 AEKNNSKKKPSNKKKAALMFANAEFFYEKAILKFNYSVQEEEDTCLGGKW
 SFDDVPMPLRTVMLIPGDKMNEIMDKLKEYLSVTRTRPLEQKLISEEDLAANDILDY
 KDDDDKV

Purity	> 80% as determined by SDS-PAGE and Coomassie blue staining.
Stability	Stable for 12 months from the date of receipt of the product under proper storage and handling conditions. Avoid repeated freeze-thaw cycles.
Storage	Store at -80 centigrade.
Concentration	>50 ug/mL as determined by microplate BCA method.
Preparation	Recombinant protein was captured through anti-DDK affinity column followed by conventional chromatography steps.
Protein Families	Druggable Genome, Stem cell - Pluripotency
Full Length	Full L.

GENE INFORMATION

Gene Name	BCCIP BRCA2 and CDKN1A interacting protein [Homo sapiens (human)]
Official Symbol	BCCIP
Synonyms	TOK1; TOK-1
Gene ID	56647

 Tel: 1-631-559-9269 1-516-512-3133

 Email: info@creative-biomart.com  Fax: 1-631-938-8127

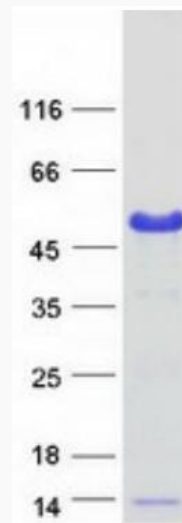
 45-1 Ramsey Road, Shirley, NY 11967, USA

mRNA Refseq [NM_078468.3](#)

Protein Refseq [NP_510868.1](#)

MIM [611883](#)

UniProt ID [Q9P287](#)



Coomassie blue staining of purified BCCIP protein.

 Tel: 1-631-559-9269 1-516-512-3133

 Email: info@creative-biomart.com  Fax: 1-631-938-8127

 45-1 Ramsey Road, Shirley, NY 11967, USA