

## Recombinant Human BCHE Protein (Met1-Ala282), C-His tagged

Cat. No. BCHE-2290H Lot. No. (See product label)

### SPECIFICATION

<b>Product Overview</b>	Recombinant human BCHE (Met1-Ala282) protein fused with the C-terminal His tag was expressed in E. coli.
<b>Species</b>	Human
<b>Source</b>	E.coli
<b>ProteinLength</b>	Met1-Ala282
<b>Molecular Mass</b>	31.02 kDa
<b>Purity</b>	>90 % as determined by SDS-PAGE.
<b>Notes</b>	For research use only.
<b>Storage</b>	Use a manual defrost freezer and avoid repeated freeze thaw cycles. Store at 2 to 8 centigrade for one week. Store at -20 to -80 centigrade for twelve months from the date of receipt.
<b>Storage Buffer</b>	Supplied as solution form in PBS or lyophilized from PBS.
<b>Reconstitution</b>	Reconstitute in sterile water for a stock solution.
<b>Shipping</b>	In general, proteins are provided as lyophilized powder/frozen liquid. They are

 Tel: 1-631-559-9269 1-516-512-3133

 Email: [info@creative-biomart.com](mailto:info@creative-biomart.com)  Fax: 1-631-938-8127

 45-1 Ramsey Road, Shirley, NY 11967, USA

shipped out with dry ice/blue ice unless customers require otherwise.

## GENE INFORMATION

<b>Gene Name</b>	BCHE butyrylcholinesterase [ Homo sapiens (human) ]
<b>Official Symbol</b>	BCHE
<b>Synonyms</b>	BCHE; butyrylcholinesterase; CHE1, cholinesterase 1; cholinesterase; E1; cholinesterase 1; choline esterase II; pseudocholinesterase; butyrylcholine esterase; acylcholine acylhydrolase; CHE1;
<b>Gene ID</b>	590
<b>mRNA Refseq</b>	NM_000055
<b>Protein Refseq</b>	NP_000046
<b>MIM</b>	177400
<b>UniProt ID</b>	P06276

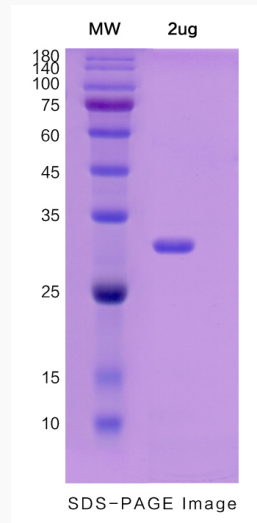
 Tel: 1-631-559-9269 1-516-512-3133

 Email: [info@creative-biomart.com](mailto:info@creative-biomart.com)  Fax: 1-631-938-8127

 45-1 Ramsey Road, Shirley, NY 11967, USA



**SDS-PAGE**



Tel: 1-631-559-9269 1-516-512-3133

Email: [info@creative-biomart.com](mailto:info@creative-biomart.com) Fax: 1-631-938-8127

45-1 Ramsey Road, Shirley, NY 11967, USA